

VISIT CONWY

CAMBRIAN

29 OCT RALLY 2022



SPECTATOR INFORMATION



BUY
TICKETS
NOW...



28/29.10.22





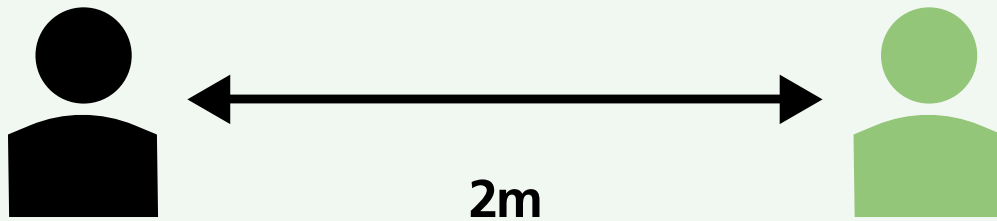
Llywodraeth Cymru
Welsh Government



GIG
CYMRU
NHS
WALES | Iechyd Cyhoeddus
Cymru
Public Health
Wales

CADW PELLTER DIOGEL.

CADW EICH TÎM YN DDIOGEL. CADW CYMRU'N DDIOGEL.



KEEP YOUR DISTANCE.

KEEP YOUR TEAM SAFE. KEEP WALES SAFE.

Am fwy o wybodaeth ewch i
llyw.cymru/coronafeirws

For more information go to
gov.wales/coronavirus

CORONAFEIRWS

AMDDIFFYN
EICH HUN AC
ERAILL

CORONAVIRUS

**PROTECT
YOURSELF
& OTHERS**



DO NOT:

- Stand on the track
- Stand below the level of the track
- Stand in front of arrows or signs
- Stand in Prohibited Areas
- Stand or sit on or near log piles, walls or fences
- Sit close to the edge of the track
- Block escape routes
- Be distracted
- Play games with your safety or that of drivers
- Remove Stage signs or arrows
- Be the one to stop the stage

ALWAYS:

- Expect the unexpected
- Listen for approaching cars
- Remain alert
- Leave yourself room to move quickly
- Try to keep behind something solid
- Keep children under supervision
- Keep dogs on a lead
- Do as the Marshals ask
- Help the Marshals to run a safe stage

BE SURE THAT:

- The unexpected can Happen
- If you ignore Marshals' instructions the Stage will be stopped

PLEASE PROTECT:

- Yourself
- Others around you
- The Stage

ACKNOWLEDGEMENTS

THE ORGANISERS ARE INDEBTED TO THE FOLLOWING:



- › All Residents on route
- › Association of North Western Car Clubs
- › Bodnant Welsh Food Bwyd Cymru Bodnant
- › Brenig Visitor Centre
- › British Trials & Rally Drivers Association
- › Competitors
- › Conwy County Borough Council
- › Conwy County Community Councils
- › Conwy Harbour Master
- › Conwy Tourist Board
- › Denbighshire County Council
- › Dwr Cymru
- › Dylan Roberts cyf
- › Gemini Communications
- › Llandudno Town Council
- › Marshals from near and far!
- › Medical personnel
- › Mostyn Estates
- › Motorsport UK
- › Natural Resources Wales
- › North Wales Police
- › Onthepacenote
- › Patterson Pacenotes
- › Peter Lucas Tool Hire
- › Pine Lodge Rally Maps
- › RAB Rally Timing
- › Radio Operators
- › Rally4Wales
- › Rescue & Recovery Crews
- › Rybrook Land Rover Conwy
- › Scrutineers
- › Snowdonia National Park
- › Stewards
- › Tynemouth Computer Services
- › Victoria Centre, Llandudno
- › View Creative
- › Welsh Association of Motor Clubs

CHAMPIONSHIPS



CHAMPIONSHIPS SPONSORS



SPONSORS



ORGANISATIONS



SPECTATE SAFELY!



ARI
NEEDS
YOU
TO

Be alert!

Always expect the unexpected

Stay at the designated spectator areas

Remember that in an accident anything can happen

Always follow the instructions of the marshals

Your safety – Your life

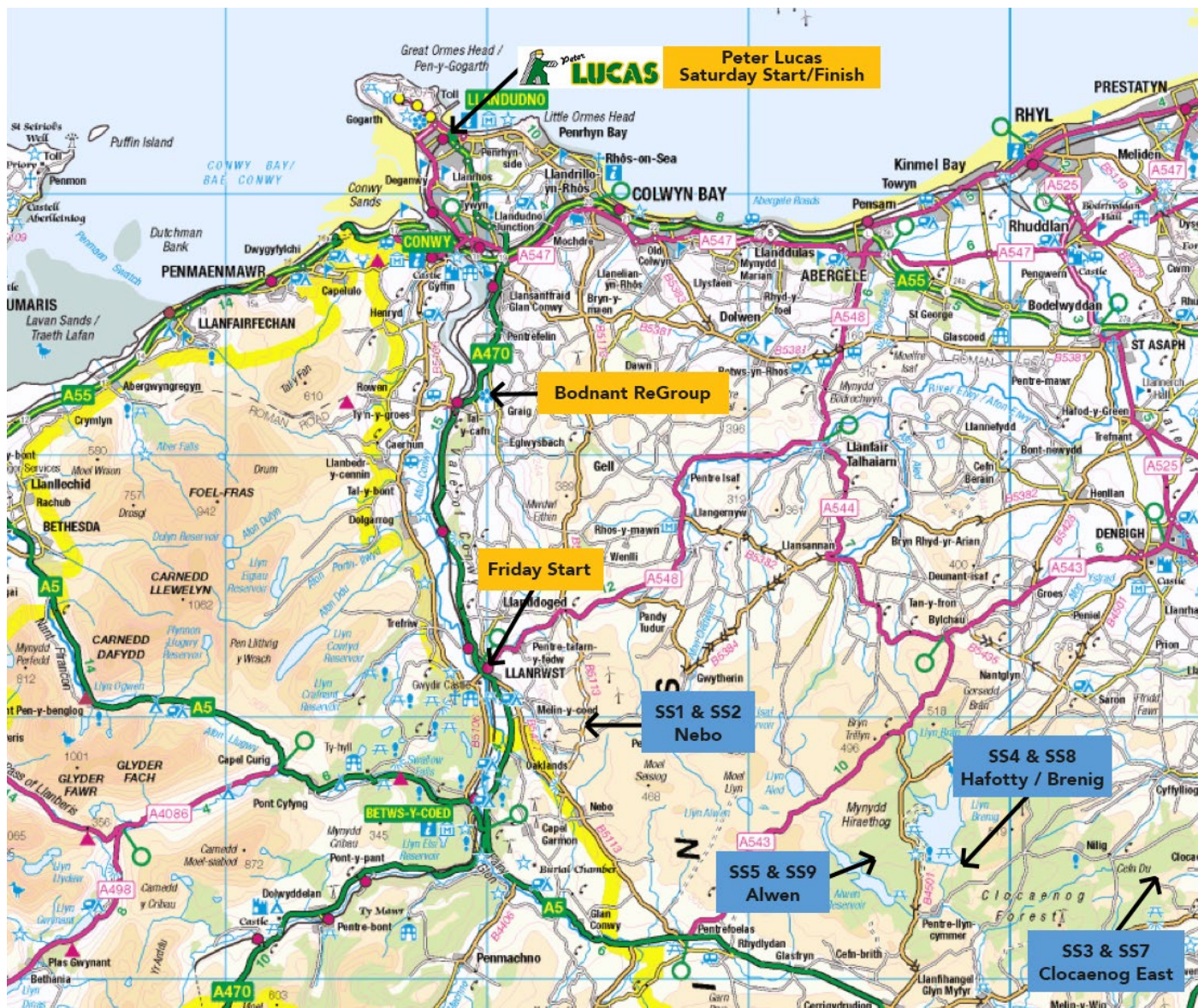
ONLY A SAFE RALLY IS A GOOD RALLY

#AriNeedsYou



msauk.org/rallyfuture

2022 VISITCONWY CAMBRIAN RALLY EVENT TIMETABLE



FRIDAY 28TH OCTOBER 2022:

Scrutineering 12:00 - 18:30hrs / Location Multi-storey Car Park, Victoria Centre, Llandudno.
A great opportunity to get close to the cars and meet the Drivers / Navigators and teams.

FRIDAY 28TH OCTOBER 2022:

- MC1:** LLANRWST – First Car Due Off @ 19.01
- SS1:** NEBO 1 – First Car Due Off @ 19.10
- LLANRWST REGROUP**
- SS2:** NEBO 2 – First Car Due Off @ 20.02

SATURDAY 29TH OCTOBER 2022:

- MC2A:** PETER LUCAS RE-START - LLANDUDNO
First Car Due Off the Ramp @ 08.01
- SS3:** JOLLY HIRE CLOCAENOG 1 – First Car Due @ 09.39
- SS4:** BRENIG 1 – First Car Due @ 10.02
- SS5:** GWYNEDD FORKLIFTS ALWEN – First Car Due @ 10.16
- MC4/MC5:** SERVICE IN/OUT – LLANDUDNO JUNCTION
- SS7:** JOLLY HIRE CLOCAENOG 2 – First Car Due @ 14.22
- SS8:** BRENIG 2 – First Car Due @ 14.44
- SS9:** GWYNEDD FORKLIFTS ALWEN 2 – First Car Due @ 14.58
- MC6:** PETER LUCAS LLANDUDNO PROMENADE
– First Car Due @ 16.46 **FINISH OF RALLY**



HOSPITALITY AT BRENIG

£24 – £48

per person

- Priority parking
- Breakfast bap & hot drink
- Lunch and drink
- Hot drink whilst watching



SS1 / SS2 NEBO

FIRST CAR DUE @ 19.10 SS1 || FIRST CAR DUE @ 20.02 SS2
SURFACE: TARMAC || 6.96 MILE SPECIAL STAGE

A brand new closed road special stage in the dark! An amazing start to the Cambrian! Max. of 40 to complete the two stages.

Spectator Areas @ Post 6+7

Follow arrows off the A5 @ Pentrefoelas - Very quiet onto the B5113.
Follow arrows to Nebo - Very quiet please @ Nebo. Park as instructed.
NO LITTER PLEASE!!



**STAGE CAR PARK
OPENING TIME**
Nebo 16.30hrs

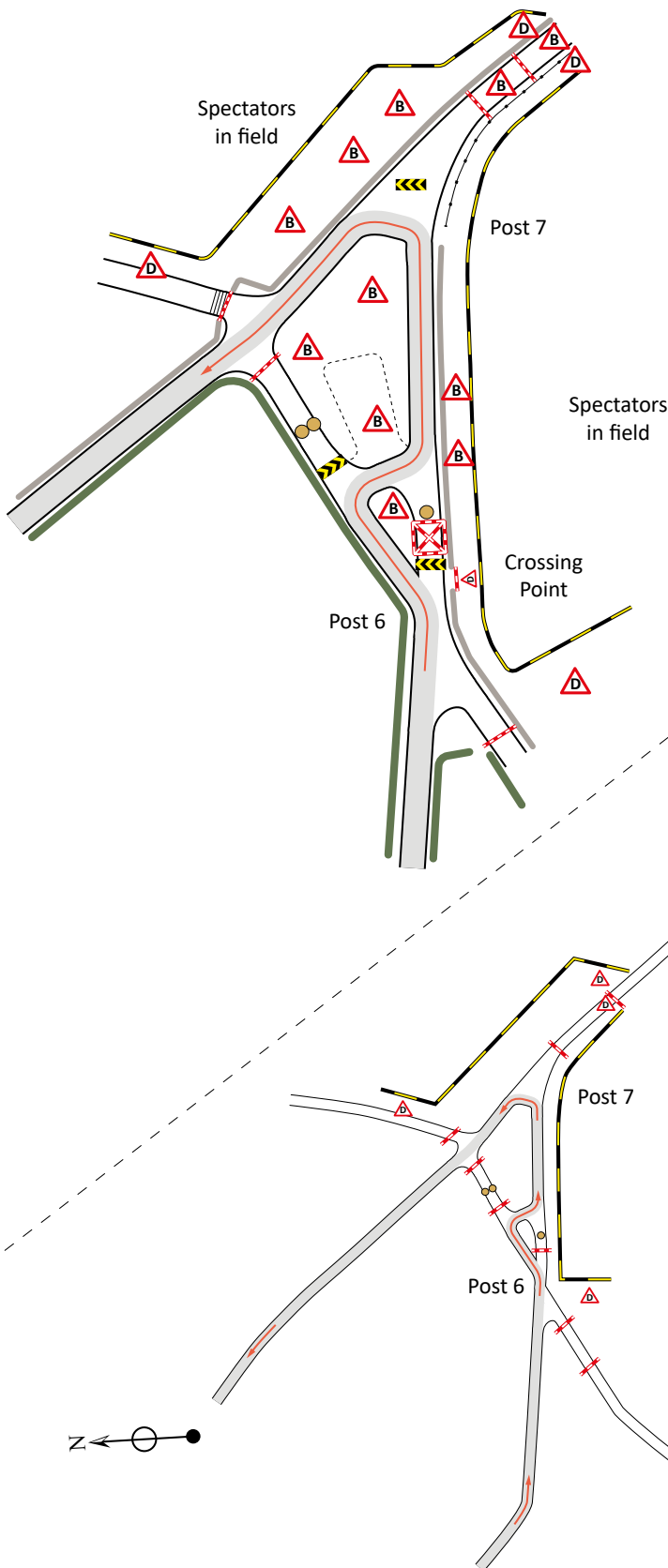
SPECTATE SAFELY!

ARI NEEDS YOU TO


Be alert!
Always expect the unexpected
Stay at the designated spectator areas
Remember that in an accident anything can happen
Always follow the instructions of the marshals
Your safety - Your life
ONLY A SAFE RALLY IS A GOOD RALLY

#AriNeedsYou msauk.org/rallyfuture






SPECTATE SAFELY!



ARI NEEDS YOU TO

Be alert!
Always expect the unexpected
Stay at the designated spectator areas
Remember that in an accident anything can happen
Always follow the instructions of the marshals
Your safety - Your life
ONLY A SAFE RALLY IS A GOOD RALLY

#AriNeedsYou  msauk.org/rallyfuture

WARNING MOTOR SPORT CAN BE DANGEROUS



SS3 - JOLLY HIRE CLOCAENOG 1

FIRST CAR DUE @ 09.39 || SURFACE: GRAVEL || 6.49 MILE SPECIAL STAGE

The most famous stage in Wales? As used for the WRGB. Superb viewing from the car park.

Spectator Areas @ Post 20

Car park entrance off the B5105 near Clawdd Newydd.
Follow arrows and follow instructions. Catering and toilets available. NO LITTER PLEASE!!



STAGE CAR PARK
OPENING TIME
Clocaenog East
07.15hrs

SS7 - JOLLY HIRE CLOCAENOG 2

FIRST CAR DUE @ 14.22 || SURFACE: GRAVEL
5.27 MILE SPECIAL STAGE

SPECTATE SAFELY!

ARI NEEDS YOU TO

Be alert!
Always expect the unexpected
Stay at the designated spectator areas
Remember that in an accident anything can happen
Always follow the instructions of the marshals
Your safety - Your life
ONLY A SAFE RALLY IS A GOOD RALLY

#AriNeedsYou RALLY FUTURE msauk.org/rallyfuture

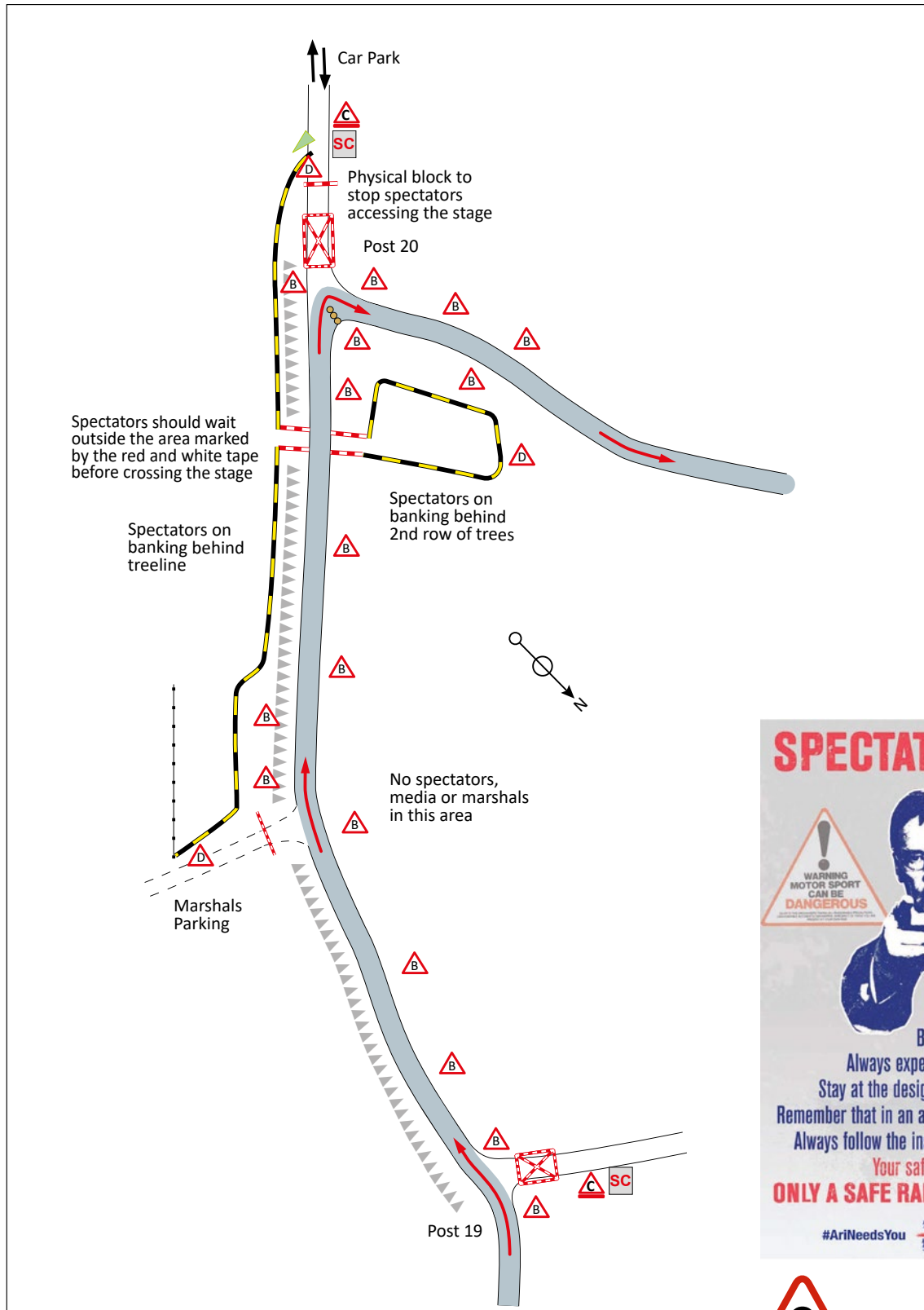
WARNING MOTOR SPORT CAN BE DANGEROUS

DESPITE THE ORGANISERS TAKING ALL REASONABLE PRECAUTIONS, UNAVOIDABLE ACCIDENTS CAN HAPPEN. IN RESPECT OF THIS YOU ARE PRESENT AT YOUR OWN RISK.

Please Don't Litter

Help Keep Your Community Clean

SS3 - JOLLY HIRE CLOCAENOG 1 / SS7 - JOLLY HIRE CLOCAENOG 2



SPECTATE SAFELY!

ARI NEEDS YOU TO

Be alert!
 Always expect the unexpected
 Stay at the designated spectator areas
 Remember that in an accident anything can happen
 Always follow the instructions of the marshals
 Your safety - Your life
ONLY A SAFE RALLY IS A GOOD RALLY

#AriNeedsYou msauk.org/rallyfuture



SS4 - BRENIG 1

FIRST CAR DUE: 10.02 || SURFACE: 80% GRAVEL 20% TARMAC
|| 4.46 MILE SPECIAL STAGE

'Brenig' stage used this year for the first time on the Cambrian.
Crews will love it!

Follow arrows off the B4501 - See Map 1.
Spectator viewing @ Posts 14, 15, 16 + 17. VIP parking available.



**STAGE CAR PARK
OPENING TIME**
Brenig 07.15hrs

SS8 - BRENIG 2

FIRST CAR DUE @ 14.44 || SURFACE: 80% GRAVEL 20% TARMAC || 4.46 MILE SPECIAL STAGE

SPECTATE SAFELY!

ARI NEEDS YOU TO

Be alert!
Always expect the unexpected
Stay at the designated spectator areas
Remember that in an accident anything can happen
Always follow the instructions of the marshals
Your safety - Your life
ONLY A SAFE RALLY IS A GOOD RALLY

#AriNeedsYou msauk.org/rallyfuture

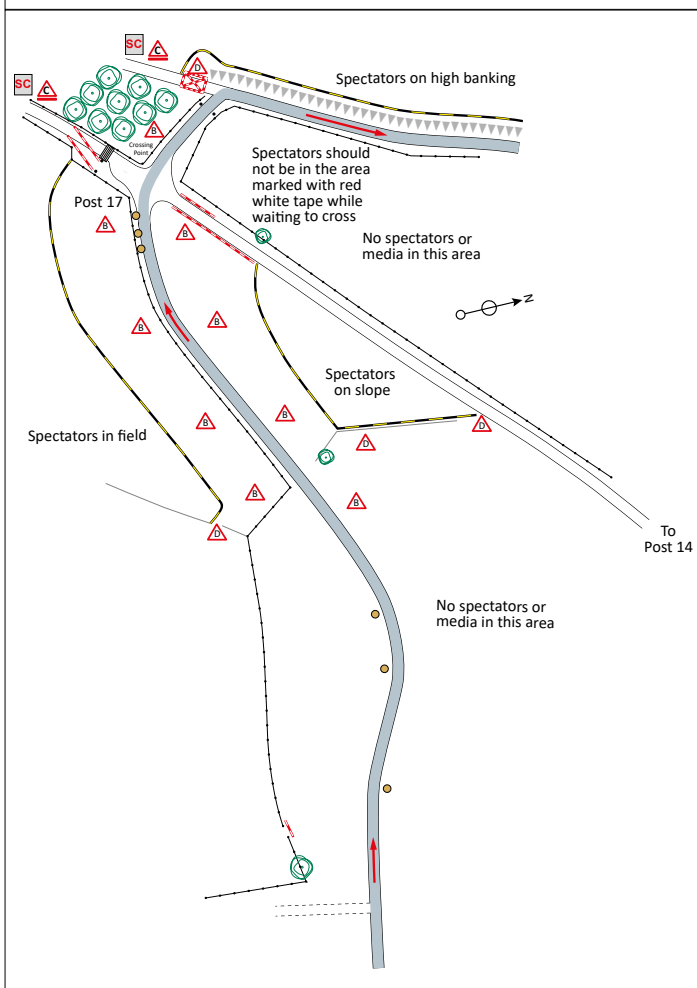
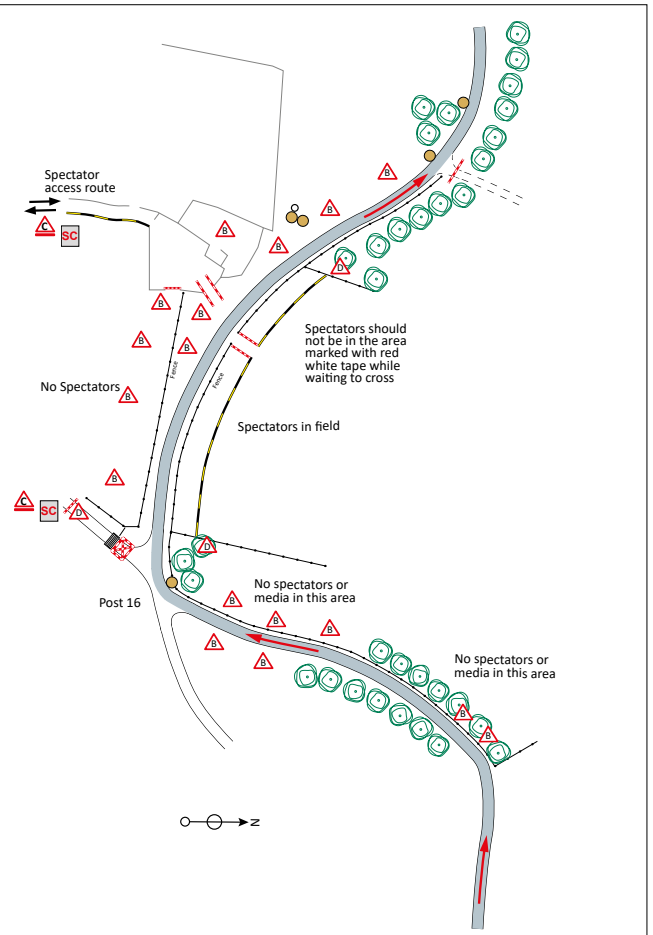
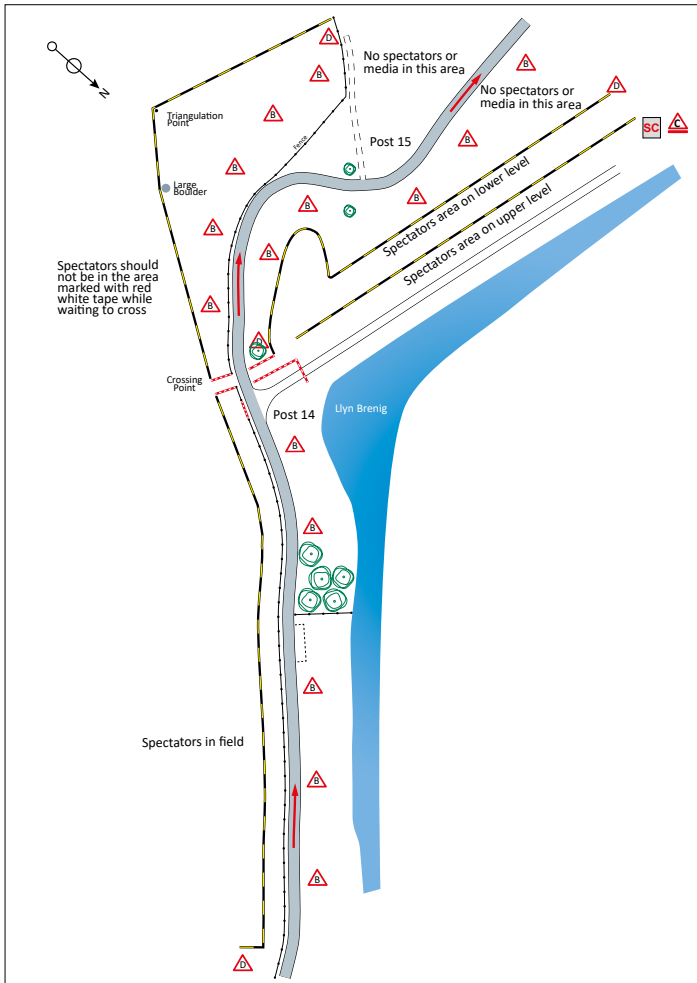
HOSPITALITY AT BRENIG
£24 - £48 per person

- Priority parking
- Breakfast bap & hot drink
- Lunch and drink
- Hot drink whilst watching

Please Don't Litter
Help Keep Your Community Clean

WARNING MOTOR SPORT CAN BE DANGEROUS
DESPITE THE ORGANISERS TAKING ALL REASONABLE PRECAUTIONS, UNAVOIDABLE ACCIDENTS CAN HAPPEN IN RESPECT OF THIS YOU ARE PRESENT AT YOUR OWN RISK.

SS4 - BRENIG 1



SPECTATE SAFELY!

ARI NEEDS YOU TO

Be alert!
Always expect the unexpected
Stay at the designated spectator areas
Remember that in an accident anything can happen
Always follow the instructions of the marshals
Your safety - Your life
ONLY A SAFE RALLY IS A GOOD RALLY

#AriNeedsYou msauk.org/rallyfuture



SPONSORED BY GWYNEDD FORKLIFTS



SS5 GWYNEDD FORKLIFTS ALWEN 1

FIRST CAR DUE: 10.16 || SURFACE: GRAVEL || 5.91 MILES SPECIAL STAGE

A Cambrian 'Classic Stage' - Fast stage with many junctions.

Top viewing @ Posts 14, 13, 10. Choice of three car parks P1, P2 + P3.
NO PARKING ON THE B4501!! Catering and toilets available.
NO LITTER PLEASE!!!



STAGE CAR PARK
OPENING TIME
Alwen 07.30hrs

SS9 GWYNEDD FORKLIFTS ALWEN 2

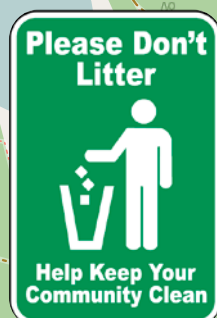
FIRST CAR DUE: 14.58 || SURFACE: GRAVEL || 5.91 MILES SPECIAL STAGE

SPECTATE SAFELY!

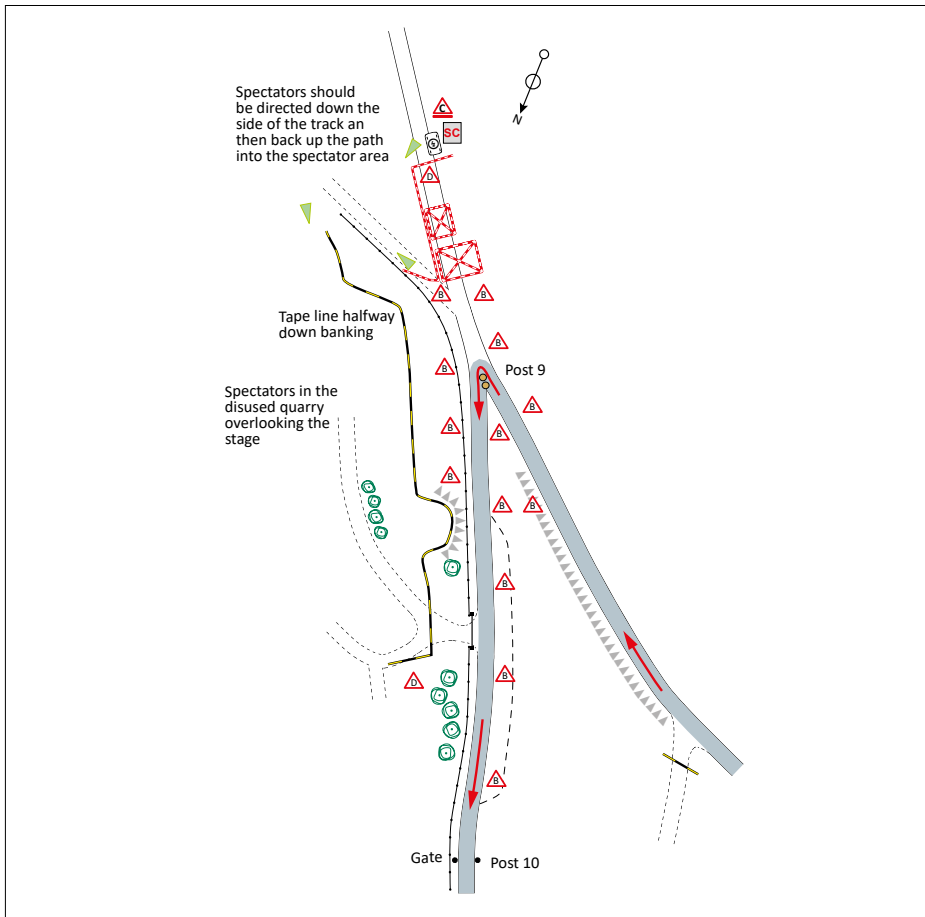
ARI NEEDS YOU TO

Be alert!
Always expect the unexpected
Stay at the designated spectator areas
Remember that in an accident anything can happen
Always follow the instructions of the marshals
Your safety - Your life
ONLY A SAFE RALLY IS A GOOD RALLY

#AriNeedsYou msauk.org/rallyfuture



SS5 - GWYNEDD FORKLIFTS ALWEN 1 / SS9 - GWYNEDD FORKLIFTS ALWEN 2



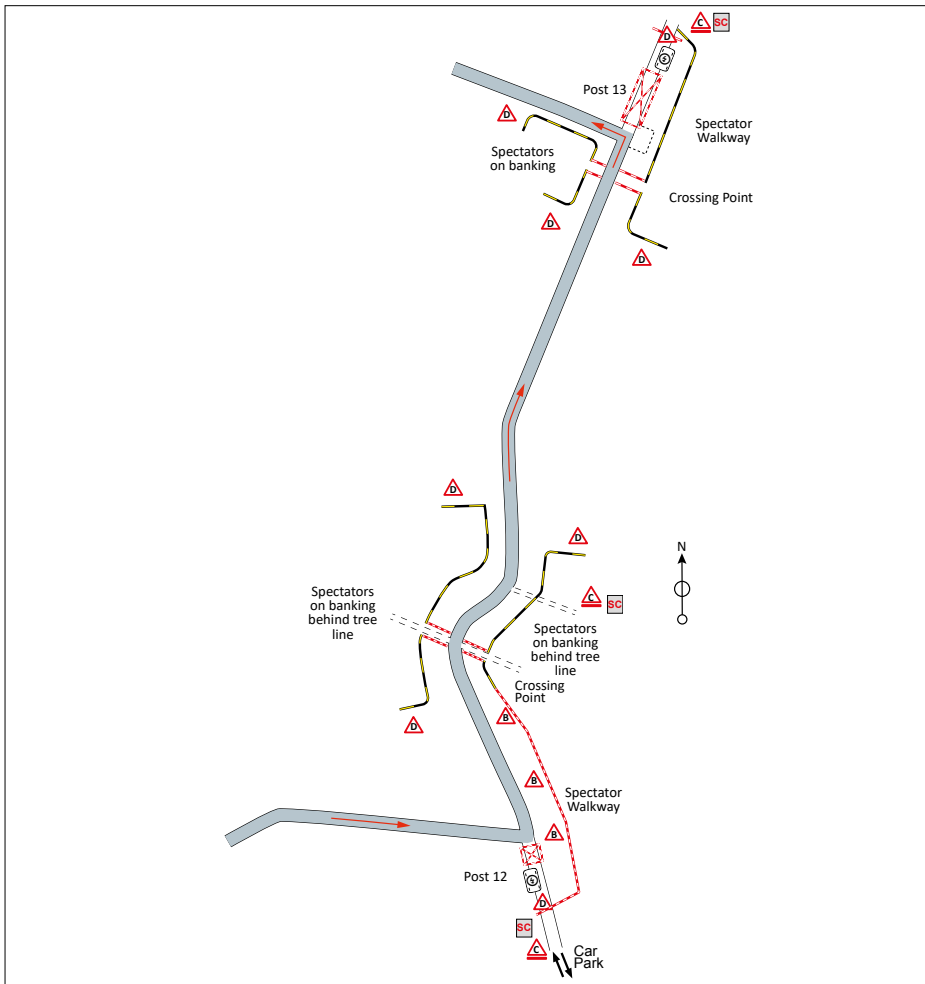
SPECTATE SAFELY!

ARI NEEDS YOU TO

Be alert!
Always expect the unexpected
Stay at the designated spectator areas
Remember that in an accident anything can happen
Always follow the instructions of the marshals
Your safety - Your life
ONLY A SAFE RALLY IS A GOOD RALLY

#AriNeedsYou msauk.org/rallyfuture

The poster features a man in a suit pointing directly at the viewer. To his left is a triangular warning sign with an exclamation mark and the text 'WARNING MOTOR SPORT CAN BE DANGEROUS'. The text 'ARI NEEDS YOU TO' is in large, bold letters. Below it, several lines of text provide safety instructions. At the bottom, there are social media and website links.





Don't give
pests and
diseases
an easy ride

Human activity is a key factor in the spread of pests and diseases, being able to move them faster and over longer distances than natural means of spread can.

Visitors to the woodlands can play an important part in preventing the spread of pests and diseases. We can unknowingly encounter infection as we walk through the woodland, this can be spread by the mud & leaves that collect on our footwear or wheels. Infection could be spread to the next place we visit if we do not clean our footwear and bikes before our next visit.

You can help reduce the spread of pests and diseases by carrying out simple cleaning tasks. These will hopefully become second nature as you get used to arriving for each walk or bike ride with clean equipment. You can also keep an eye out for any sightings of possible tree disease or pest and report to TreeAlert.

Think feet

Arrive in the woodland with clean boots or shoes. You'll be sure you aren't carrying tree pest or disease from your last walk in the countryside.

After your visit, simply knock any mud and leaves from your footwear and wash any leftover mud off once you're home. This will ensure you don't accidentally move disease across the countryside.

Think wheels

Arriving in the woodland with clean bikes can help prevent the spread of tree diseases too. Brush off any loose dirt from your bike & tyres before you leave the woodland. Once you're home, wash any further mud or debris just to be thorough.

Keeping your bike clean does more than keeping it looking good and working well.

Think future

Keeping it clean really is that simple. You may be wondering what real difference you can actually make - but if we all take small steps together now, we're taking big steps toward keeping Wales' woodlands and countryside beautiful for generations to come.

For areas known to be infected:

Keeping your kit clean is always important for tree health, but there are situations where you may have to take more care.

- When there is a pest or disease known to be present
- There is a Plant health Notice in place

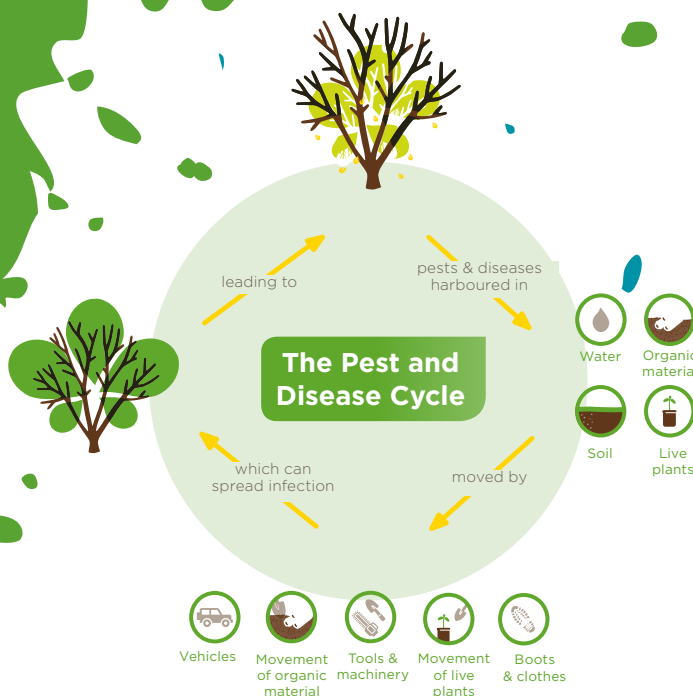
In these cases you are likely to notice a lot more signage around the woodlands.

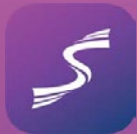
Please take the advice given on any of these signs you come across, they will contain important information in the battle against tree pests and diseases.

Key contacts and resources

- Stay up to date:
- Tell us if you spot any ill health in trees: forestry.gov.uk/treealert
- Learn more from our biosecurity info

For more information on our #Keepitclean campaign visit <https://naturalresources.wales/forestry/tree-health-and-biosecurity/biosecurity/?lang=en>





Sportity

For direct event information please download the Sportity app and insert this password:

CAM22SPEC

Sportity app is available in



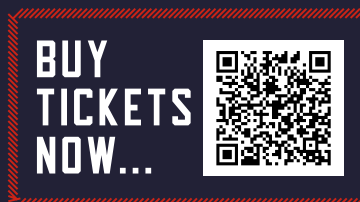
www.sportity.com

CAMBRIANRALLY.CO.UK



**ON BEHALF OF THE NORTH WALES CAR CLUB WE
THANK YOU, AND WE HOPE TO SEE YOU NEXT YEAR**

CAMBRIANRALLY.CO.UK



**JOIN THE NORTH WALES CAR CLUB AT
NORTHWALESCARCLUB.CO.UK**