



SPECTATOR INFORMATION

www.CAMBRIANRALLY.co.uk



DO NOT:

- Stand on the track
- Stand below the level of the track
- Stand in front of arrows or signs
- Stand in Prohibited Areas
- Stand or sit on or near log piles, walls or fences
- Sit close to the edge of the track
- Block escape routes
- Be distracted
- Play games with your safety or that of drivers
- Remove Stage signs or arrows
- Be the one to stop the stage

ALWAYS:

- Expect the unexpected
- Listen for approaching cars
- Remain alert
- Leave yourself room to move quickly
- Try to keep behind something solid
- Keep children under supervision
- Keep dogs on a lead
- Do as the Marshals ask
- Help the Marshals to run a safe stage

BE SURE THAT:

- The unexpected can Happen
- If you ignore Marshals' instructions the Stage will be stopped

PLEASE PROTECT:

- Yourself
- Others around you
- The Stage



ACKNOWLEDGEMENTS

THE ORGANISERS ARE INDEBTED TO THE FOLLOWING:

- | | |
|--|------------------------------------|
| ▶ Association of North Western Car Clubs | ▶ North Wales Honda |
| ▶ British Trials & Rally Drivers Association | ▶ North Wales Police |
| ▶ Competitors | ▶ On the Pacenotes |
| ▶ Conwy County Borough Council | ▶ Patterson Pace notes |
| ▶ Conwy County Community Councils | ▶ Peter Lucas Tool Hire |
| ▶ Conwy Harbour Master | ▶ Pine Lodge Rally Maps |
| ▶ Conwy Tourist Board | ▶ Radio Operators |
| ▶ Corvus Security personnel | ▶ Rescue & Recovery Crews |
| ▶ Dwr Cymru | ▶ Residents on route |
| ▶ Gemini Communications | ▶ R4W |
| ▶ Grwp Llandrillo Menai | ▶ Scrutineers |
| ▶ Gwynedd Forklifts | ▶ Snowdonia National Park |
| ▶ Llandudno Town Council | ▶ St George's Hotel |
| ▶ Marshals from near and far! | ▶ Stewards |
| ▶ Medical personnel | ▶ Tynemouth Computer Services |
| ▶ Mostyn Estates | ▶ Victoria Centre, Llandudno |
| ▶ Motorsport UK | ▶ View Creative |
| ▶ Natural Resources Wales | ▶ Waterloo Hotel |
| | ▶ Welsh Association of Motor Clubs |

WITHOUT THEIR ASSISTANCE, THE EVENT WOULD NOT GO AHEAD...

CHAMPIONSHIPS



CHAMPIONSHIPS SPONSORS



ORGANISATIONS



SPECTATE SAFELY!



ARI
NEEDS
YOU
TO

Be alert!

Always expect the unexpected

Stay at the designated spectator areas

Remember that in an accident anything can happen

Always follow the instructions of the marshals

Your safety – Your life

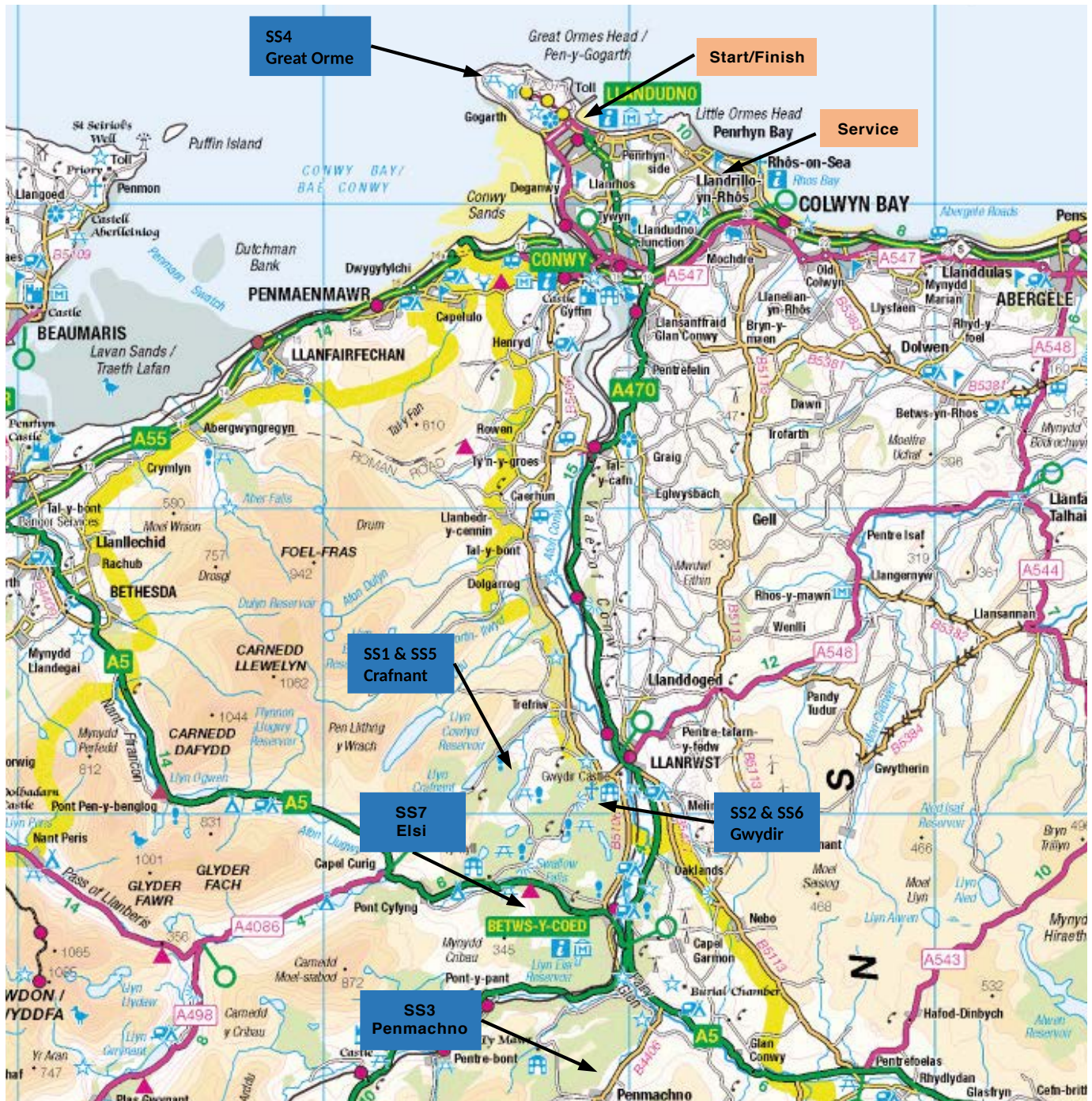
ONLY A SAFE RALLY IS A GOOD RALLY

#AriNeedsYou



msauk.org/rallyfuture

VISITCONWY CAMBRIAN RALLY EVENT TIMETABLE



FRIDAY 7TH FEBRUARY:

SCRUTINEERING 14:00 - 20:00hrs / **LOCATION** Multi-storey Car Park, Victoria Centre, Llandudno.
A great opportunity to get close to the cars and meet the Drivers / Navigators and teams.

SATURDAY 8TH FEBRUARY:

MC1: START – Llandudno promenade
First Car Due Off the Ramp @ 09.01
SS1: NO ACCESS TO SPECTATORS!!
SS2: GWYDIR 1 – First Car Due @ 10.02
SS3: PENMACHNO 1 – First Car Due @ 10.41
SS4: GREAT ORME – First Car Due @ 11.55

SERVICE A: Grwp Llandrillo Menai,
Rhos on Sea – First Car Due @ 12.23
SS5: NO ACCESS TO SPECTATORS!!
SS6: GWYDIR 2 – First Car Due @ 13.54
SS7: ELSI 1 – First Car Due @ 14.34
MC4: Llandudno Promenade
– First Car Due @ 15.43 **FINISH OF RALLY**

SUPPORTED BY GRWP LLANDRILLO MENAI

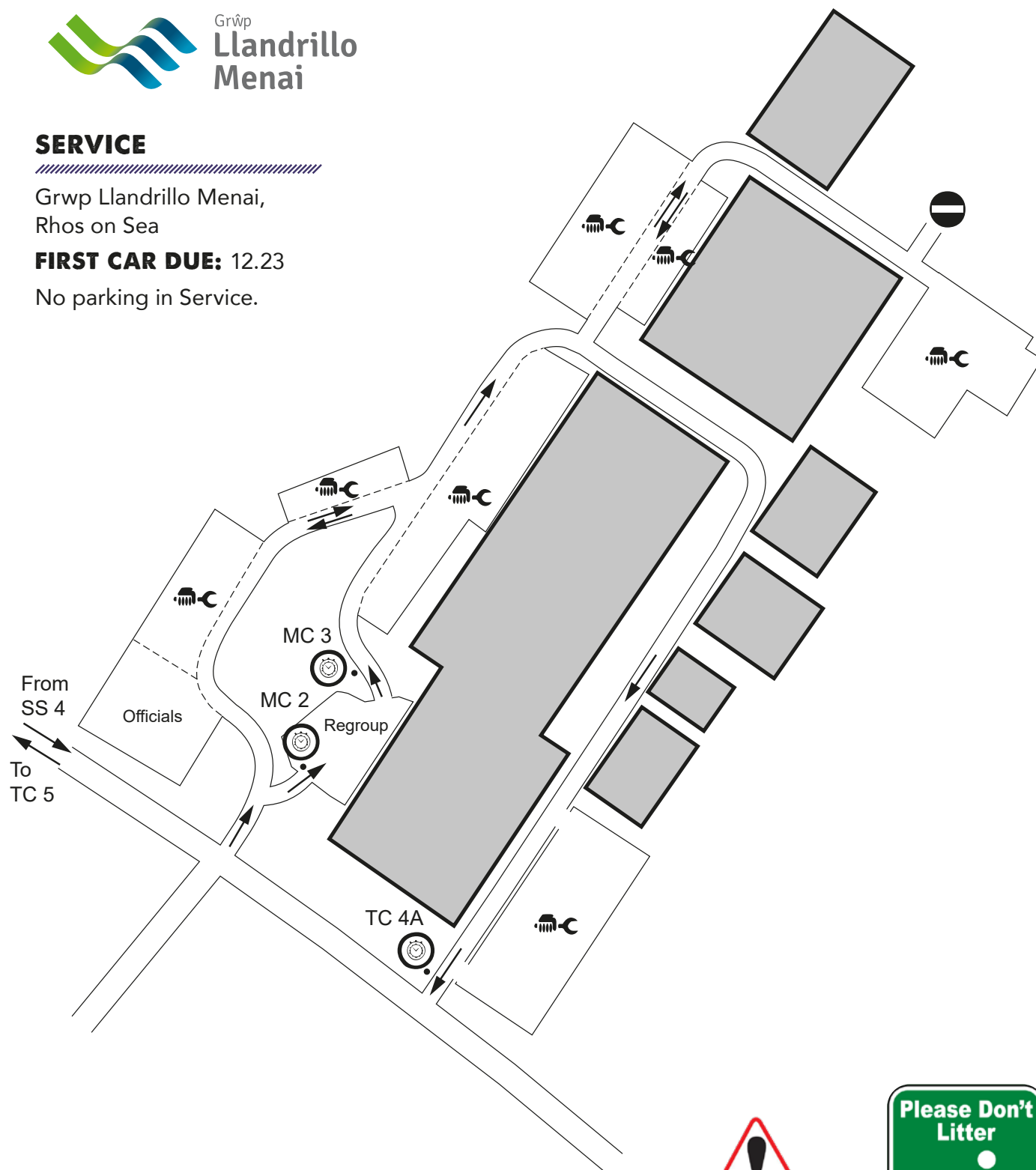


SERVICE

Grwp Llandrillo Menai,
Rhos on Sea

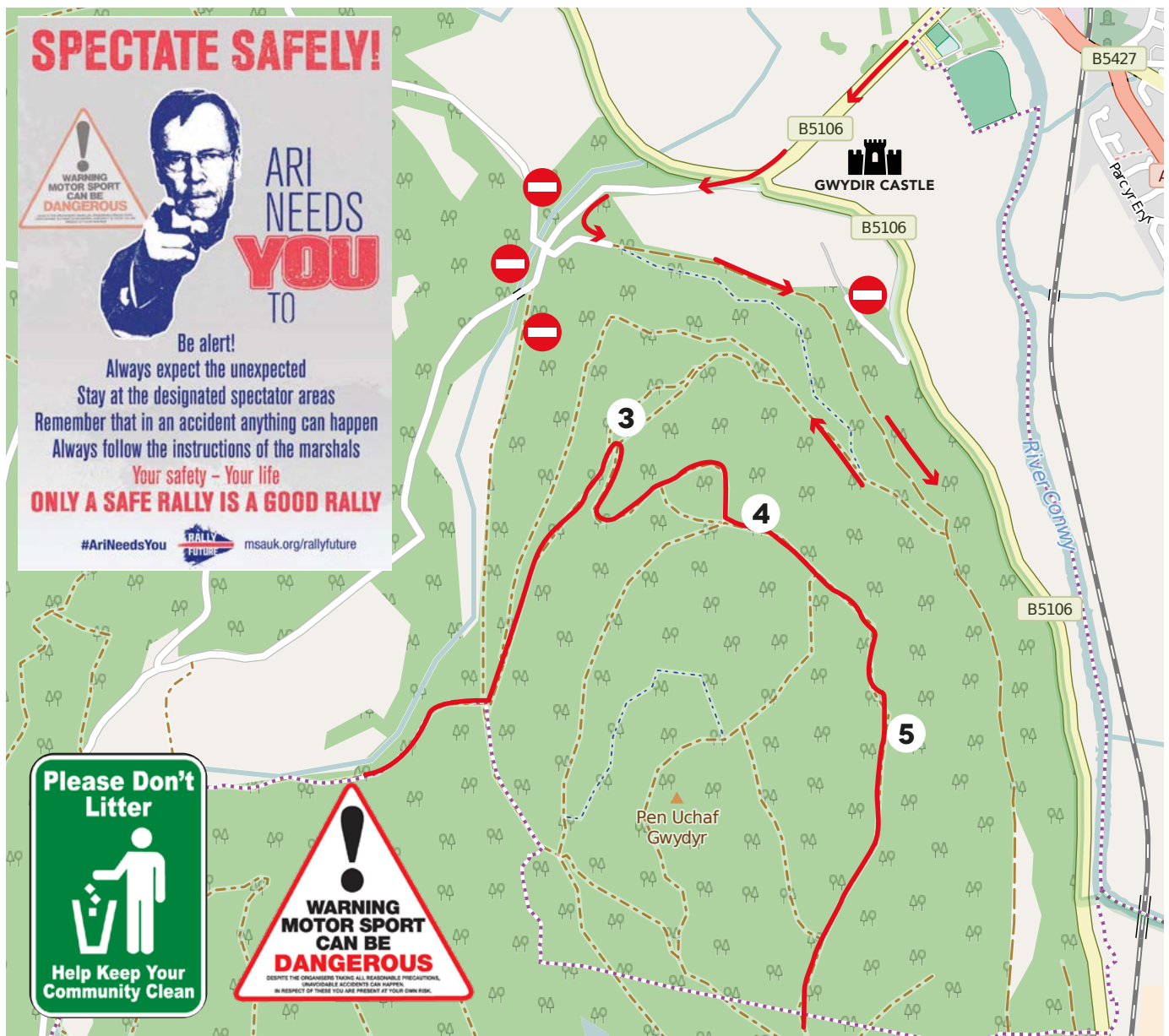
FIRST CAR DUE: 12.23

No parking in Service.



GWYNEDD
FORKLIFTS LTD

Follow arrows off the B5106 by 'Gwydir Castle'. Follow arrows on tarmac road to car park entrance on forest track@ GPS co-ordinates 53°07'54.0"N 3°48'39.0"W
Catering. £10 per car to include programme. Extra programmes available @ £5 each. Please take your litter home!!!

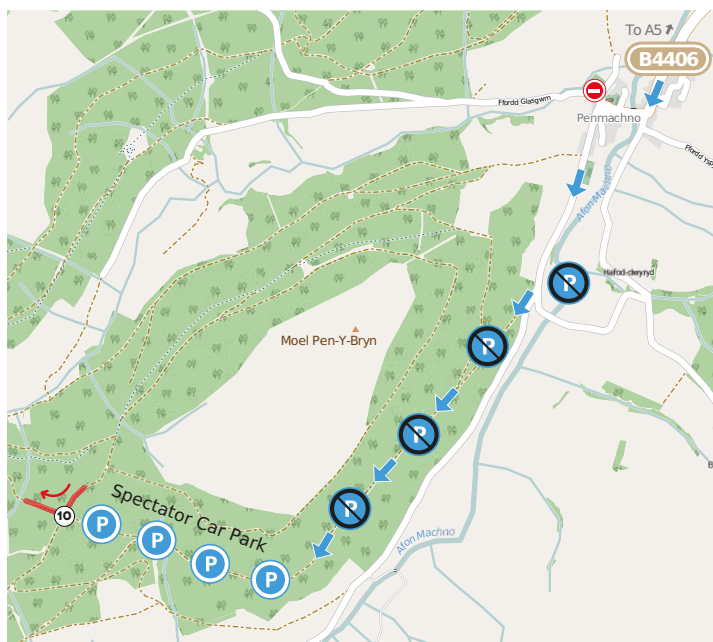
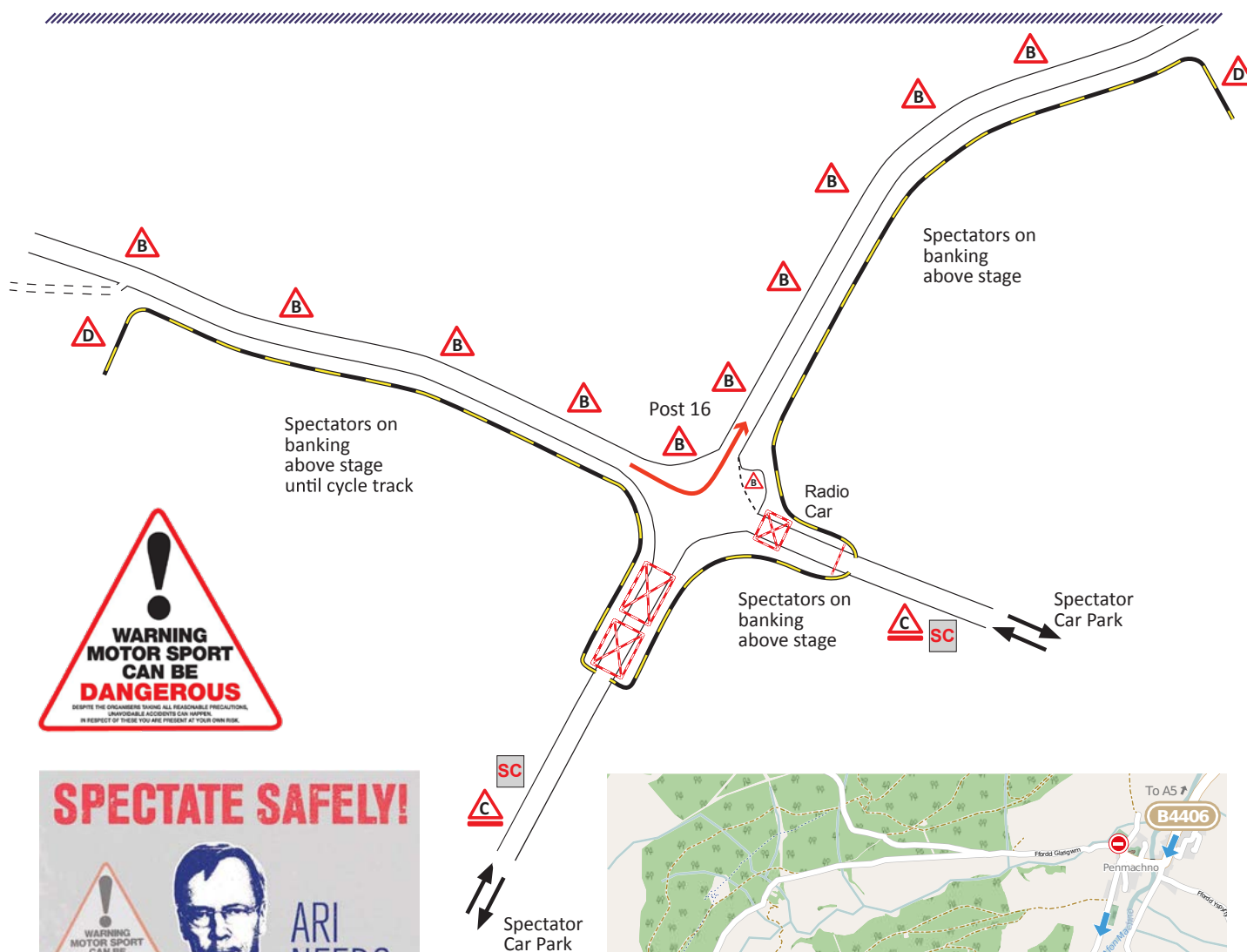
FIRST CAR DUE: 13.54 || SURFACE: GRAVEL || 6.03 MILE SPECIAL STAGE

SS3 PENMACHNO 1

FIRST CAR DUE: 10.41 || SURFACE: GRAVEL || 11.7 MILE SPECIAL STAGE!!!!

A famous rally stage and a new format/new road for 2020! Stage used on the 2019 WRGB. Excellent viewing from the car park to spectator area @ Post 16 – fast approach to tight junction! Follow spectator signs off the A5. Follow the B4406 to Penmachno village. Care & Quiet in the village!! NO PARKING ON THE B4406!! YOU HAVE BEEN WARNED. Follow arrows to forest track @ GPS co-ordinates 53°01'54"N 3°48'38"W

NO PARKING ON THE FIRST PART OF THE FOREST TRACK (NO PARKING FROM THE VILLAGE to CAR PARK ACCESS) - Follow instructions to car park. Catering. £10 per car. (£5 Parking & £5 Programme) Extra programmes available @ £5 each. NO LITTER PLEASE!!!



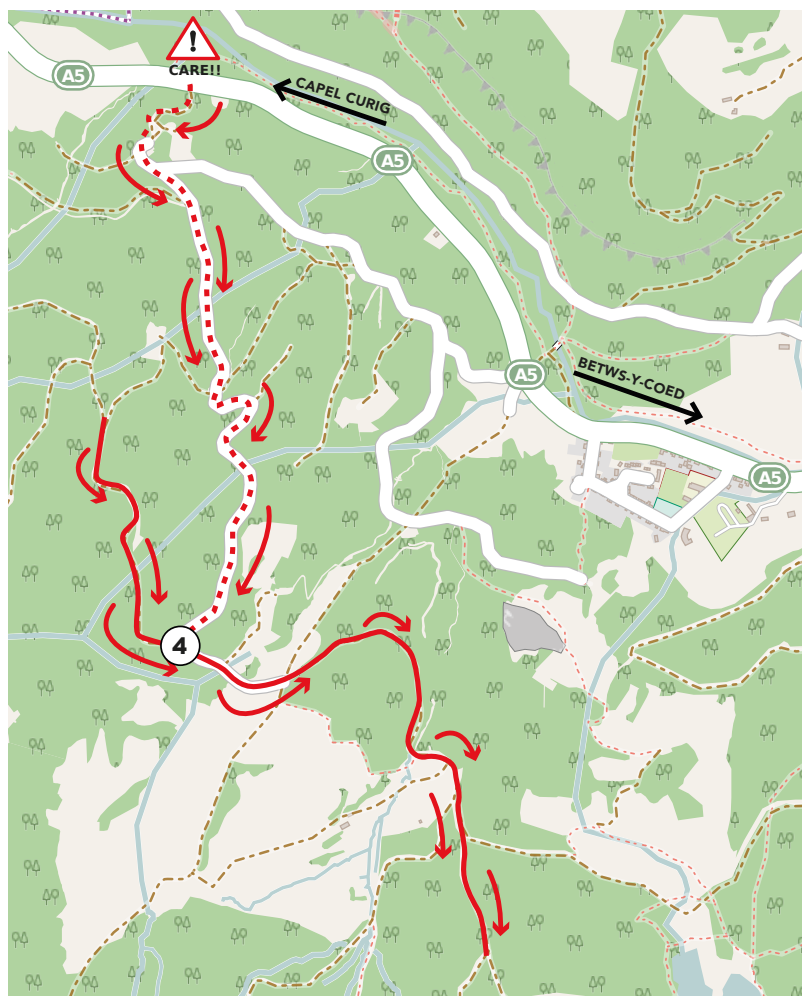
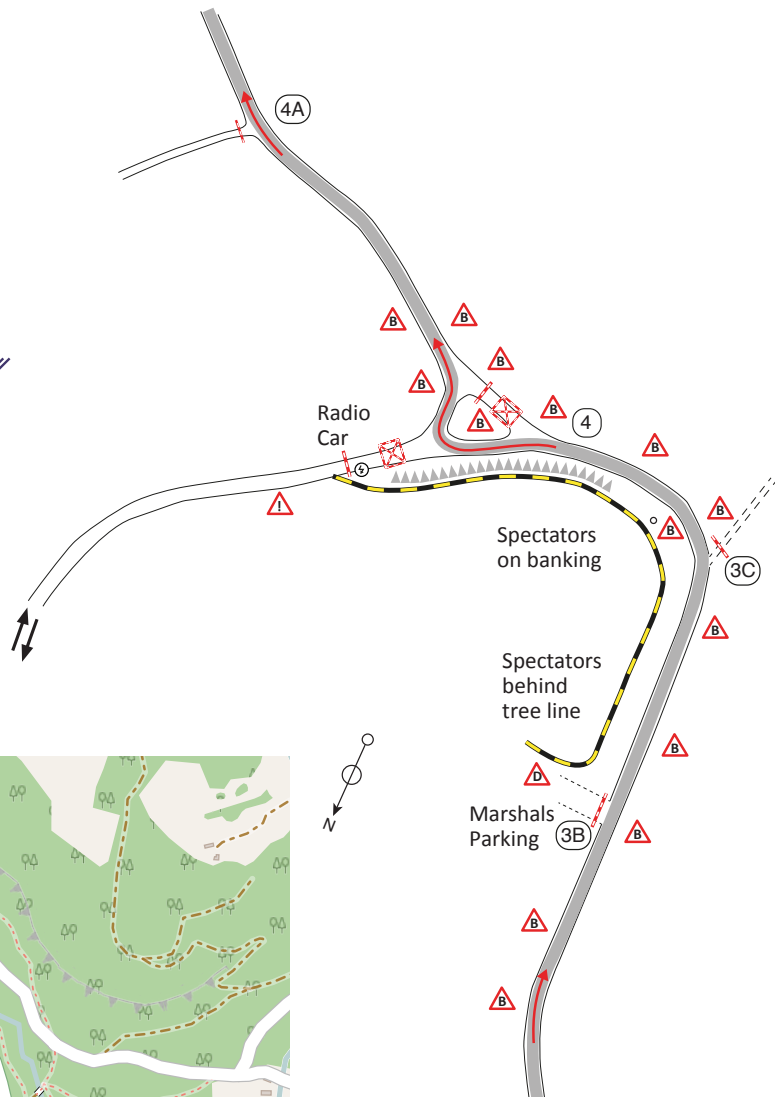
SS7 ELSI 1

FIRST CAR DUE: 14.34 || SURFACE: GRAVEL || 7.01 MILE SPECIAL STAGE

Another famous stage from the WRGB. A regular on the Cambrian Rally with its fast and tricky sections!! Spectator area @ Post 4. Follow spectator signs off the A5 from Betws Y Coed.

Car Park entrance GPS co-ordinates
53°06'03.2"N 3°50'09.7"W

Follow arrows on forest track
and instructions to car park.
Catering. £10 per car to include
programme. Extra programmes
available @ £5 each. Please take
your litter home!!!





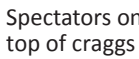
SURFACE: TWISTY TARMAAC

Twisty and demanding tarmac roads

£10 per car. (£5 Parking & £5 Programme)
Extra programmes available @ £5 each.
NO LITTER PLEASE!!! Note: Parking is only
permitted in the summit car park! Any
vehicles found in prohibited areas will be
towed away!!!

Grwp Llandrillo Rhos on Sea

////////////////////



Marshals, Media,
and Spectators
are not allowed
on the sea side
of the wall, or
on the pavement



**WARNING
MOTOR SPORT
CAN BE
DANGEROUS**

UNAVOIDABLE ACCIDENTS CAN HAPPEN.
IN RESPECT OF THESE YOU ARE PRESENT AT YOUR OWN RISK.



NORTH WALES HONDA

Tel: 01492 875991

www.northwaleshonda.co.uk



TYPE R

| | | |
|--------------------------|-----------------------------------|---------------------------------------|
| £319 Per Month | 5.9% APR Representative | 5 Years Servicing for £599* |
|--------------------------|-----------------------------------|---------------------------------------|

[EXPLORE OFFERS >>](#)

GREAT ORME POST 5



**WARNING
MOTOR SPORT
CAN BE
DANGEROUS**

DISOBTAIN THE ORGANISERS TAKING ALL REASONABLE PRECAUTIONS,
UNAVOIDABLE ACCIDENTS CAN HAPPEN.
IN RESPECT OF THESE YOU ARE PRESENT AT YOUR OWN RISK.

Spectators on top of crags

Car Park

Spectator area
Radio Car

Spectator area

Gate 4

Wall

Bench

Marshals, Media, and Spectators are not allowed on the sea side of the wall, or on the pavement



Please Don't Litter

Help Keep Your Community Clean

SPECTATE SAFELY!



ARI NEEDS YOU TO

Be alert!

Always expect the unexpected

Stay at the designated spectator areas

Remember that in an accident anything can happen

Always follow the instructions of the marshals

Your safety - Your life

ONLY A SAFE RALLY IS A GOOD RALLY

#AriNeedsYou  msauk.org/rallyfuture

**KEEP IT
CLEAN**

**Don't give
pests and
diseases
an easy ride**

Human activity is a key factor in the spread of pests and diseases, being able to move them faster and over longer distances than natural means of spread can.

Visitors to the woodlands can play an important part in preventing the spread of pests and diseases. We can unknowingly encounter infection as we walk through the woodland, this can be spread by the mud & leaves that collect on our footwear or wheels. Infection could be spread to the next place we visit if we do not clean our footwear and bikes before our next visit.

You can help reduce the spread of pests and diseases by carrying out simple cleaning tasks. These will hopefully become second nature as you get used to arriving for each walk or bike ride with clean equipment. You can also keep an eye out for any sightings of possible tree disease or pest and report to TreeAlert.



Think feet

Arrive in the woodland with clean boots or shoes. You'll be sure you aren't carrying tree pest or disease from your last walk in the countryside.

After your visit, simply knock any mud and leaves from your footwear and wash any leftover mud off once you're home. This will ensure you don't accidentally move disease across the countryside.



Think wheels

Arriving in the woodland with clean bikes can help prevent the spread of tree diseases too. Brush off any loose dirt from your bike & tyres before you leave the woodland. Once you're home, wash any further mud or debris just to be thorough.

Keeping your bike clean does more than keeping it looking good and working well.



Think future

Keeping it clean really is that simple. You may be wondering what real difference you can actually make - but if we all take small steps together now, we're taking big steps toward keeping Wales' woodlands and countryside beautiful for generations to come.

For areas known to be infected:

Keeping your kit clean is always important for tree health, but there are situations where you may have to take more care.

- When there is a pest or disease known to be present
- There is a Plant health Notice in place

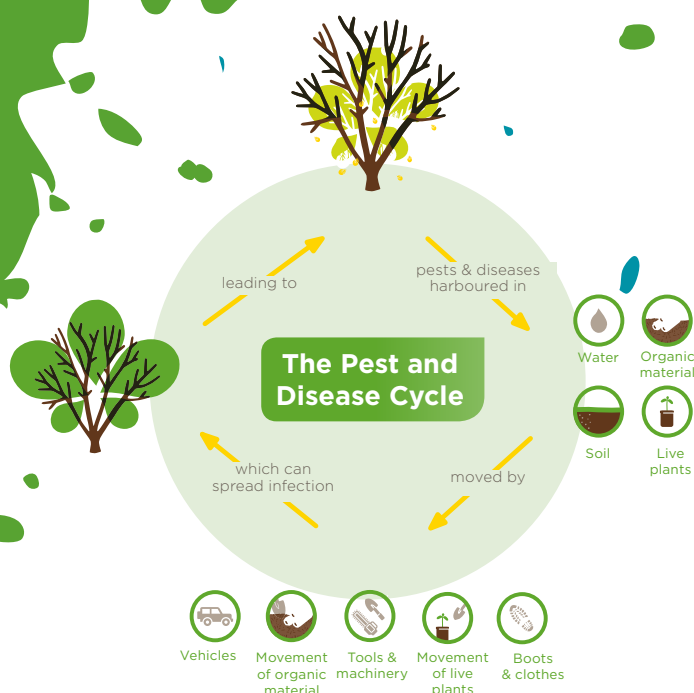
In these cases you are likely to notice a lot more signage around the woodlands.

Please take the advice given on any of these signs you come across, they will contain important information in the battle against tree pests and diseases.

Key contacts and resources

- Stay up to date:
- Tell us if you spot any ill health in trees: forestry.gov.uk/treealert
- Learn more from our biosecurity info

For more information on our #Keepitclean campaign visit <https://naturalresources.wales/forestry/tree-health-and-biosecurity/biosecurity/?lang=en>





ON BEHALF OF THE NORTH WALES CAR CLUB WE
**THANK YOU FOR VISITING THE 2020
VISIT CONWY CAMBRIAN RALLY.**

NEW DATE FOR NEXT YEAR...
TBC 2021

WE HOPE TO SEE YOU THEN!

www.CAMBRIANRALLY.CO.UK