

WWW.CAMBRIANRALLY.CO.UK



VISIT CONWY

CAMBRIAN

SAT RALLY 30 OCT

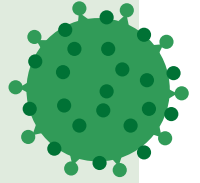


SPECTATOR INFORMATION



SHOWING SYMPTOMS?

Keep everyone safe.



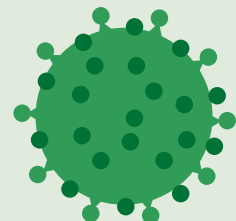
Stay home if you or anyone in your household has:

- a high temperature 38°C or above
- a persistent cough or shortness of breath
- loss of smell or taste

STOP THE SPREAD. KEEP WALES SAFE.



& OTHERS



For more information go to
gov.wales/coronavirus



DO NOT:

- Stand on the track
- Stand below the level of the track
- Stand in front of arrows or signs
- Stand in Prohibited Areas
- Stand or sit on or near log piles, walls or fences
- Sit close to the edge of the track
- Block escape routes
- Be distracted
- Play games with your safety or that of drivers
- Remove Stage signs or arrows
- Be the one to stop the stage

ALWAYS:

- Expect the unexpected
- Listen for approaching cars
- Remain alert
- Leave yourself room to move quickly
- Try to keep behind something solid
- Keep children under supervision
- Keep dogs on a lead
- Do as the Marshals ask
- Help the Marshals to run a safe stage

BE SURE THAT:

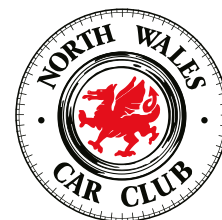
- The unexpected can Happen
- If you ignore Marshals' instructions the Stage will be stopped

PLEASE PROTECT:

- Yourself
- Others around you
- The Stage

ACKNOWLEDGEMENTS

THE ORGANISERS ARE INDEBTED TO THE FOLLOWING:



- | | |
|--|------------------------------------|
| › All Residents on route | › Natural Resources Wales |
| › Association of North Western Car Clubs | › North Wales Honda |
| › British Trials & Rally Drivers Association | › North Wales Police |
| › Coleg Llandrillo | › Onthepacenote |
| › Competitors | › Patterson Pacenotes |
| › Conwy County Borough Council | › Peter Lucas Tool Hire |
| › Conwy County Community Councils | › Pine Lodge Rally Maps |
| › Conwy Harbour Master | › RAB Rally Timing |
| › Conwy Tourist Information | › Radio Operators |
| › Dwr Cymru | › Rally4Wales |
| › Dylan Roberts cyf | › Rescue & Recovery Crews |
| › Gemini Communications | › Scrutineers |
| › Llandudno Town Council | › Corvus Security personnel |
| › Marshals from near and far! | › Snowdonia National Park |
| › Medical personnel | › Stewards |
| › Mostyn Estates | › Tynemouth Computer Services |
| › Motorsport UK | › Victoria Centre, Llandudno |
| | › View Creative |
| | › Welsh Association of Motor Clubs |

CHAMPIONSHIPS



CHAMPIONSHIPS SPONSORS



ORGANISATIONS



SPECTATE SAFELY!



ARI
NEEDS
YOU
TO

Be alert!

Always expect the unexpected

Stay at the designated spectator areas

Remember that in an accident anything can happen

Always follow the instructions of the marshals

Your safety – Your life

ONLY A SAFE RALLY IS A GOOD RALLY

#AriNeedsYou



msauk.org/rallyfuture

2021 VISITCONWY CAMBRIAN RALLY EVENT TIMETABLE



FRIDAY 29TH OCTOBER:

Scrutineering 14:00 - 20:00hrs / Location Multi-storey Car Park, Victoria Centre, Llandudno.
A great opportunity to get close to the cars and meet the Drivers / Navigators and teams.

SATURDAY 30TH OCTOBER:

MC1: START – LLANDUDNO PROMENADE

First Car Due Off the Ramp @ 08.01

SS1: GWYDIR 1 – First Car Due @ 08.43

SS2: PENMACHNO 1 – First Car Due @ 09.19

SS3: ALWEN 1 – First Car Due @ 10.22

MC2/MC3: EIRIAS PARK REGROUP

– First Car Due @ 11.20

SS4: GWYDIR 2 – First Car Due @ 12.53

SS5: PENMACHNO 2 – First Car Due @ 13.29

SS6: ALWEN 2 – First Car Due @ 14.32

SS7: TWIN LAKES – First Car Due @ 15.01

MC4: LLANDUDNO PROMENADE

– First Car Due @ 16.11

FINISH OF RALLY

SSI GWYDIR 1

FIRST CAR DUE: 08.43 || SURFACE: GRAVEL || 5.93 MILE SPECIAL STAGE

A favourite stage with Crews and Spectators! As used on the WRGB.

Spectator areas@ Posts 3, 3a 3b, 4 and 5. Top viewing!! Crews will be at 100% for this stage.

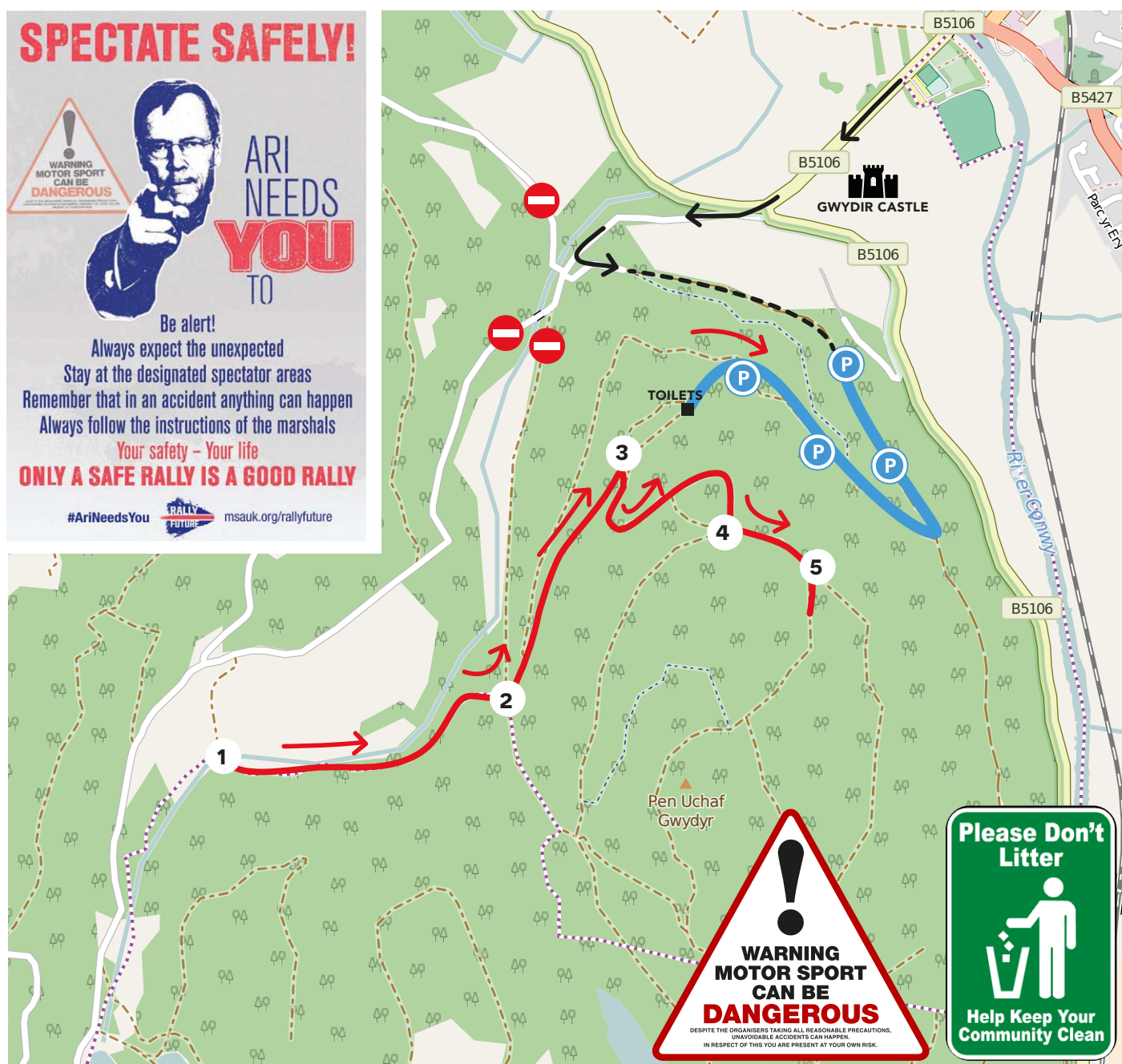
Car Park close to the action!!

Follow arrows off the B5106 by 'Gwydir Castle'. Follow arrows on tarmac road to car park entrance on forest track@ GPS co-ordinates 53°07'54.0"N 3°48'39.0"W

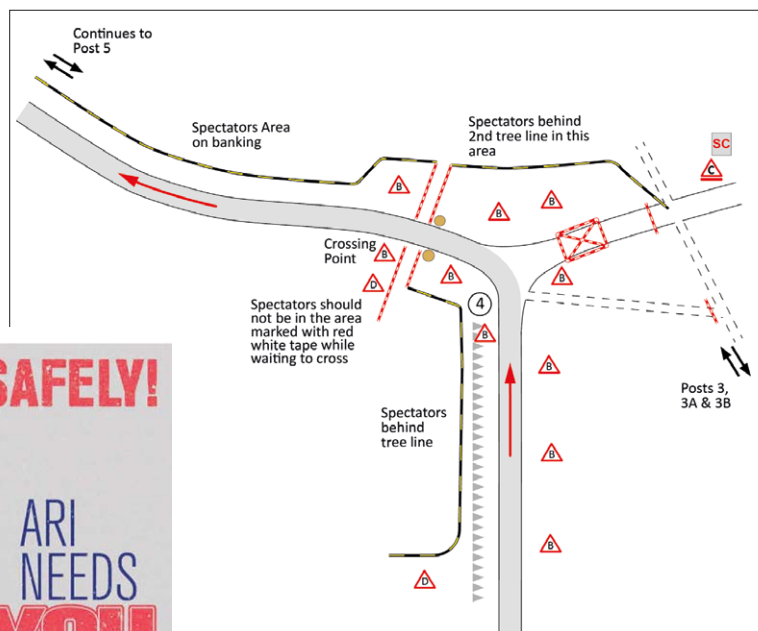
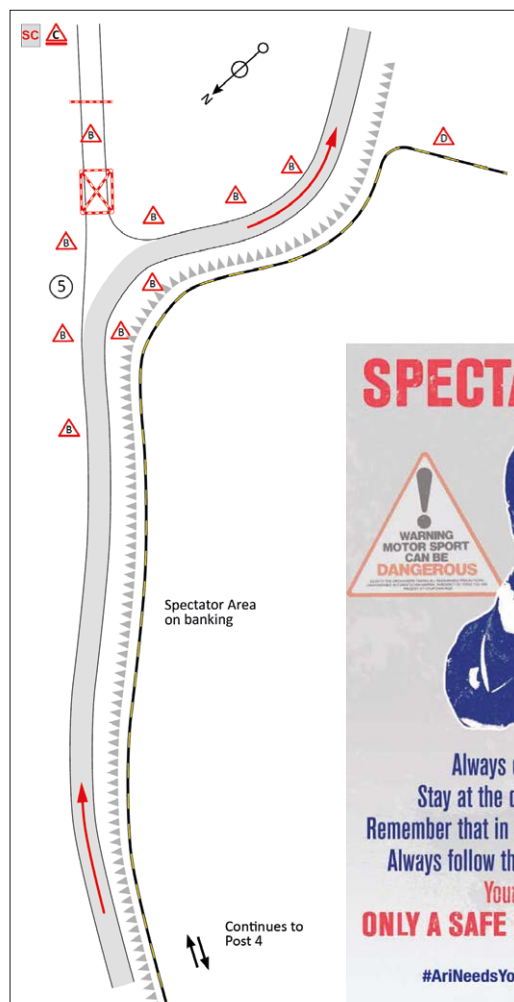
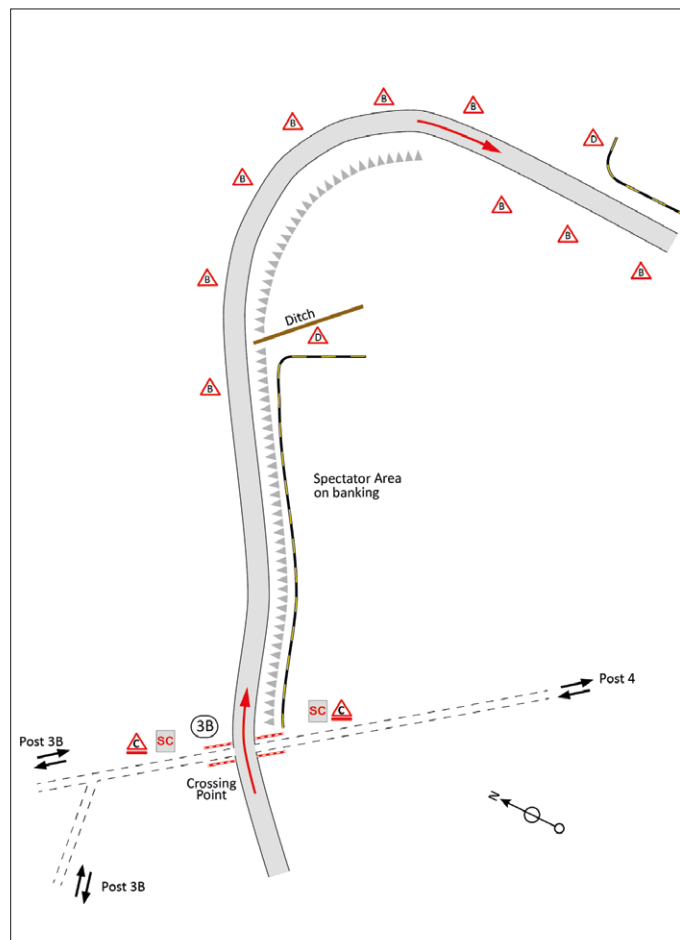
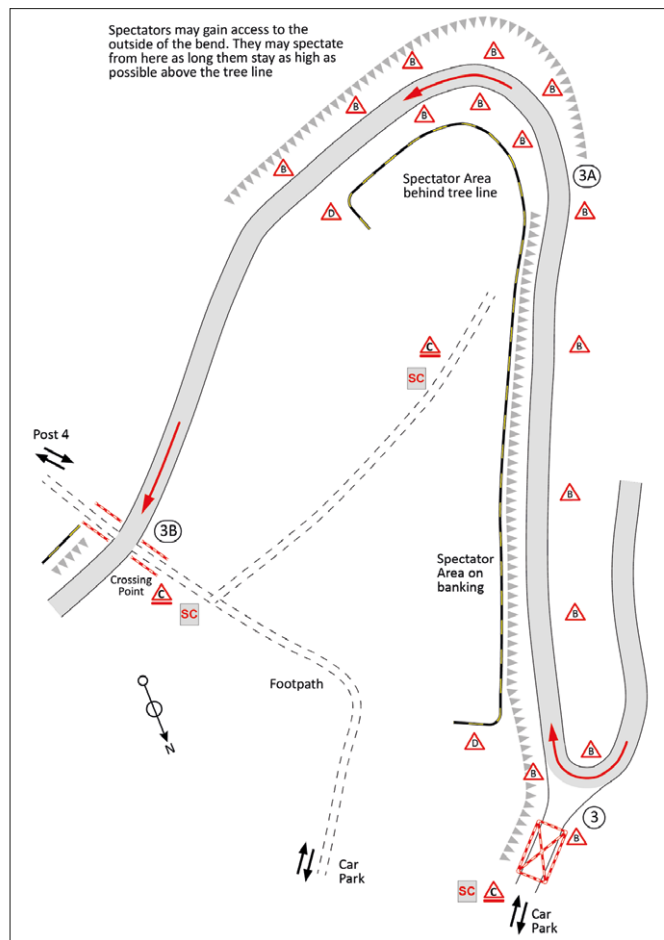
Toilets and Catering. £10 per car to include programme. Extra programmes available @ £5 each. Please take your litter home!!!

SS4 GWYDIR 2

FIRST CAR DUE: 12.53 || SURFACE: GRAVEL || 5.93 MILE SPECIAL STAGE



SSI & SS4 GWYDIR 1 & 2



SPECTATE SAFELY!

ARI NEEDS YOU TO

Be alert!
Always expect the unexpected
Stay at the designated spectator areas
Remember that in an accident anything can happen
Always follow the instructions of the marshals
Your safety - Your life
ONLY A SAFE RALLY IS A GOOD RALLY

#AriNeedsYou msauk.org/rallyfuture



SPONSORED BY GWYNEDD FORKLIFTS



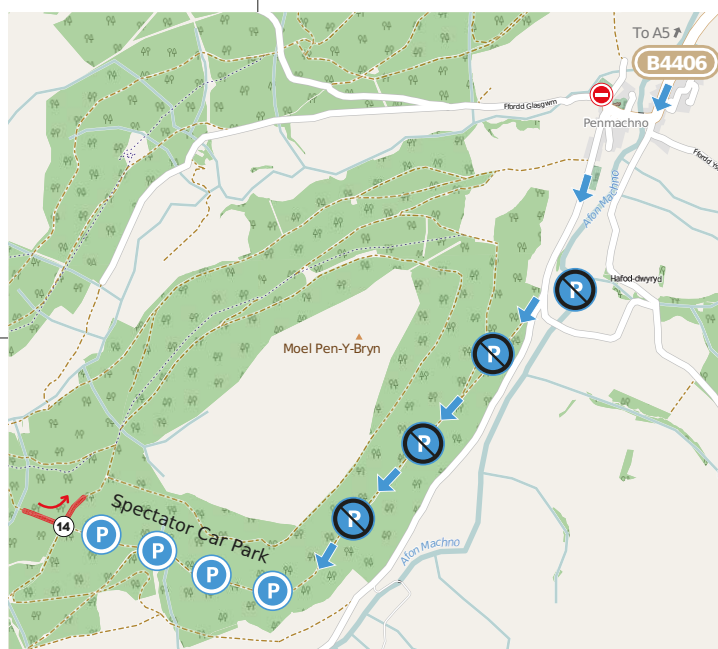
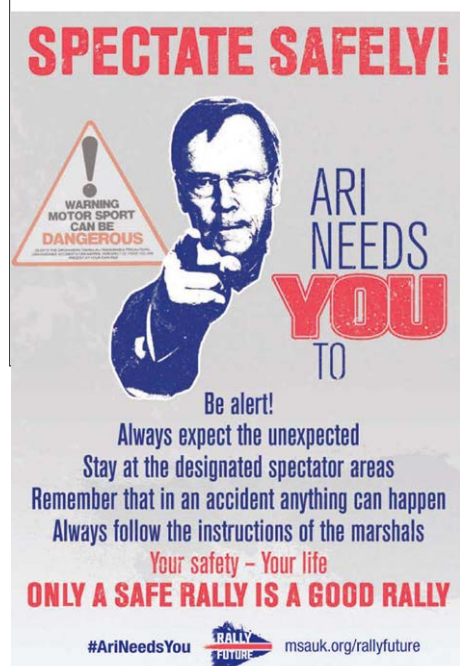
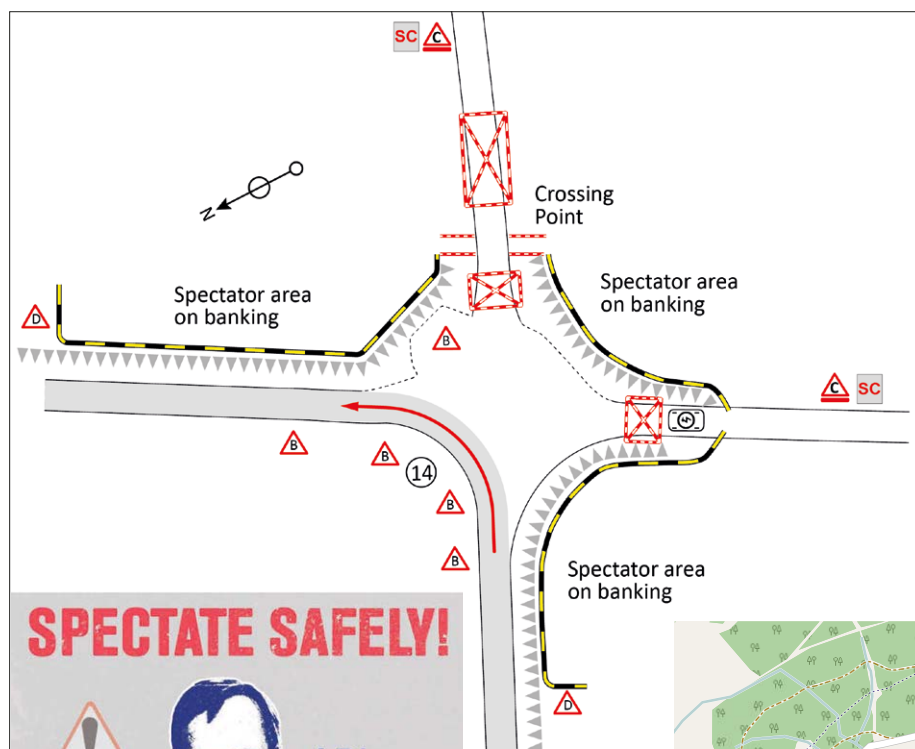
GWYNEDD FORKLIFTS PENMACHNO SS2

FIRST CAR DUE: 09.19 || SURFACE: GRAVEL || 8.36 MILE SPECIAL STAGE

A famous and tricky rally stage! New format for 2021! As used on the WRGB. Top viewing and action from the car park to spectator area @ Post 14 – fast approach to tight junction! Follow spectator signs off the A5. Follow the B4406 to Penmachno village. Care & Quiet in the village!! **NO PARKING ON THE B4406!! YOU HAVE BEEN WARNED.** Follow arrows to forest track @ GPS co-ordinates 53°01'54''N 3°48'38''W **NO PARKING ON THE FIRST PART OF THE FOREST TRACK (NO PARKING FROM THE VILLAGE to CAR PARK ACCESS) - Follow instructions to car park. Catering and Toilets . £10 per car. (£5 Parking & £5 Programme) Extra programmes available @ £5 each. NO LITTER PLEASE!!!**

GWYNEDD FORKLIFTS PENMACHNO SS5

FIRST CAR DUE: 13.29 || SURFACE: GRAVEL || 8.36 MILE SPECIAL STAGE



SS3 ALWEN 1

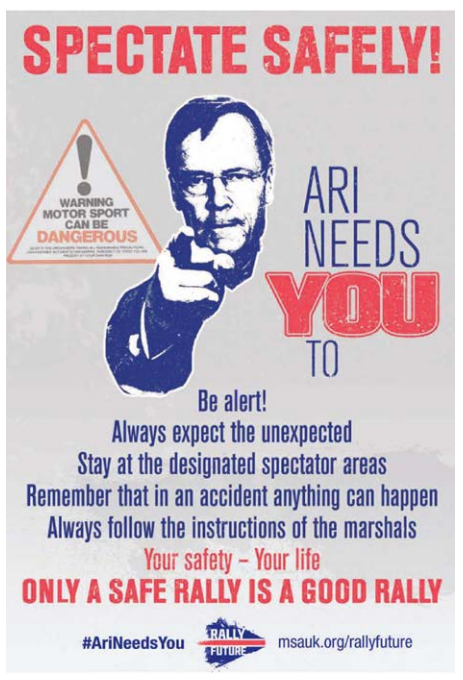
FIRST CAR DUE: 10.22 || SURFACE: GRAVEL || 6.39 MILE SPECIAL STAGE

As used many times on the Cambrian and on WRGB! Drivers Favourite! Fast special stage with many tight junctions. Top viewing @ Post 4, & 7. Choice of two car parks!! P1 and P2. Parking only on the forest roads off the B4501.

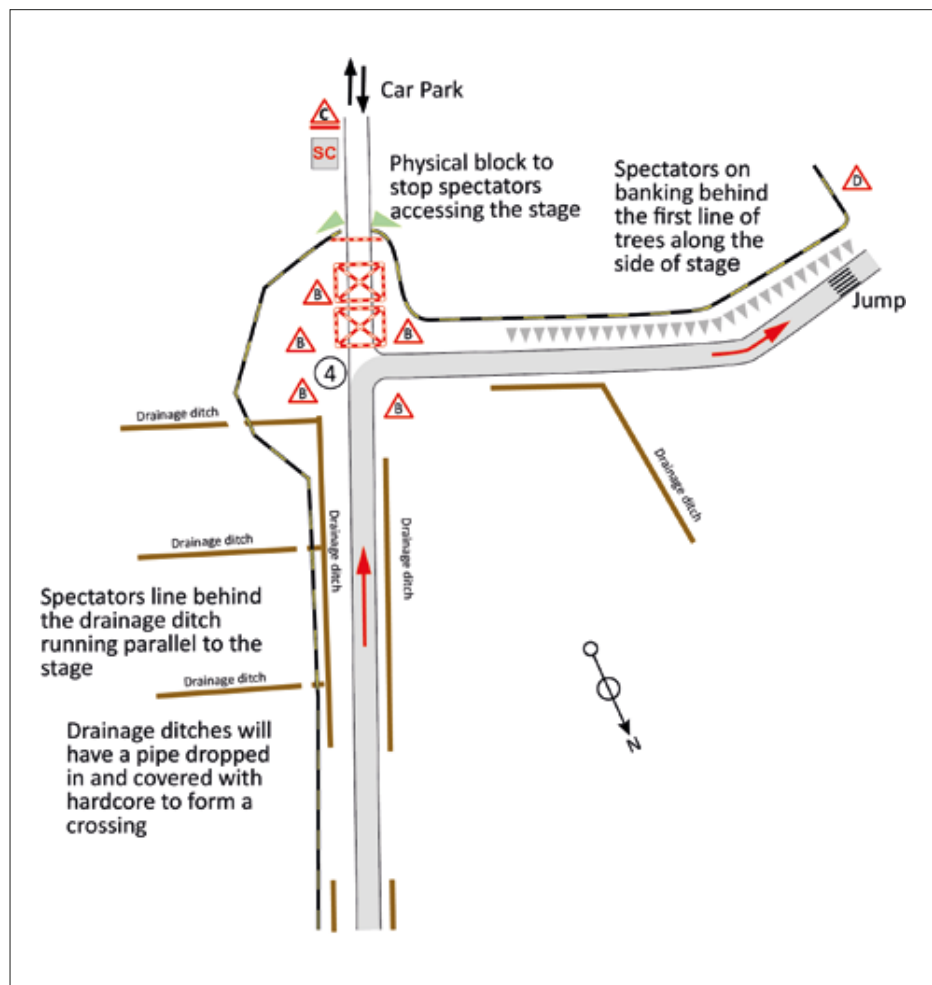
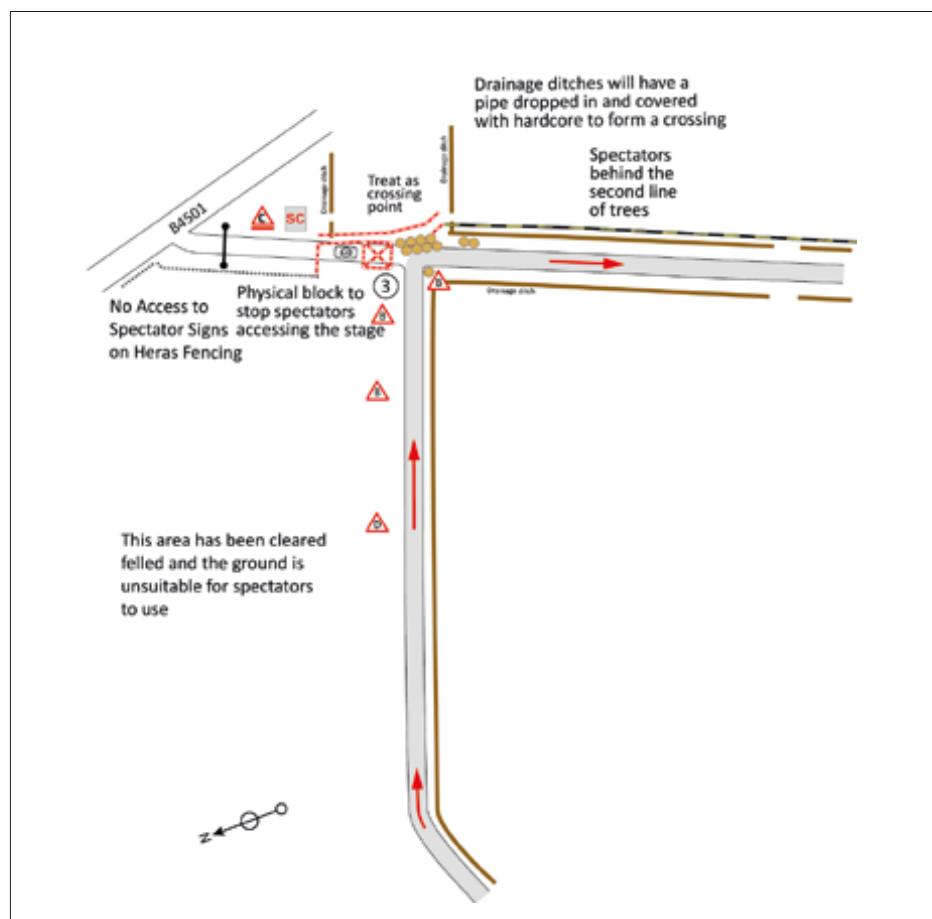
NO PARKING ON THE B4501!! YOU HAVE BEEN WARNED. Catering and toilets available. £10 per car. (£5 Parking & £5 Programme) Extra programmes available @ £5 each. NO LITTER PLEASE!!!

SS6 ALWEN 2

FIRST CAR DUE: 14.32 || SURFACE: GRAVEL || 6.39 MILE SPECIAL STAGE



SS3 & SS6 ALWEN 1 & 2



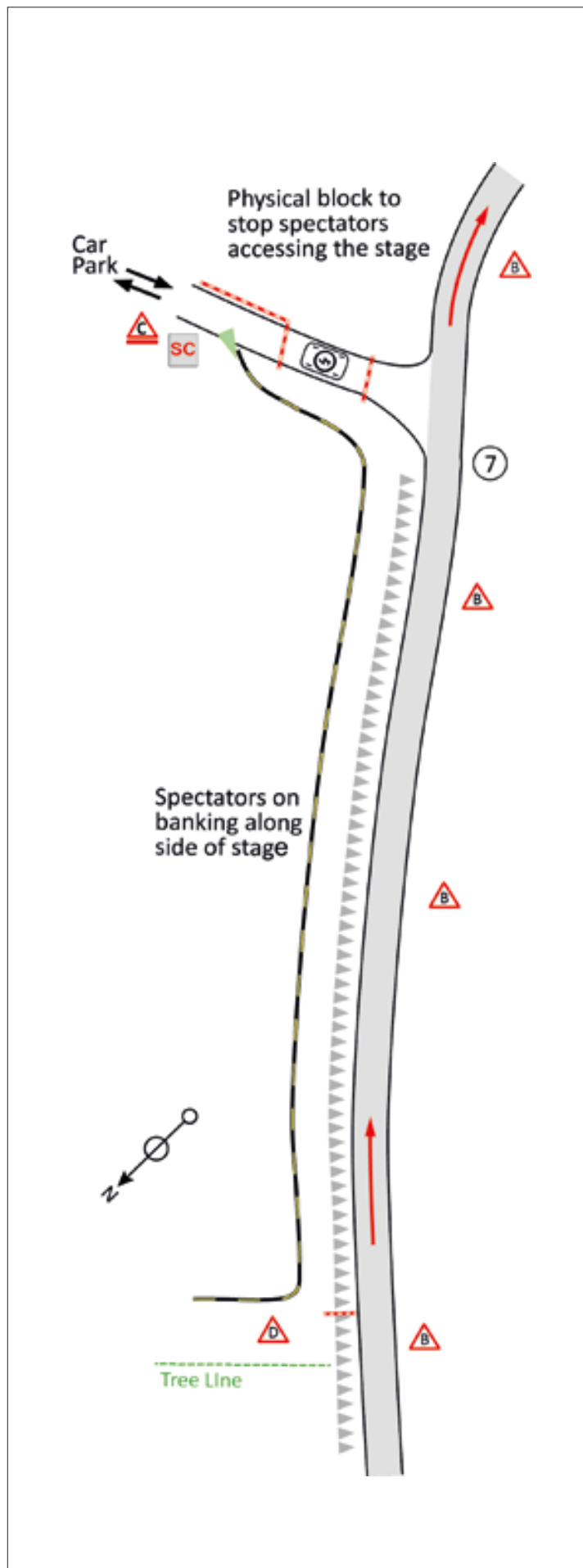
SPECTATE SAFELY!

ARI NEEDS YOU TO

Be alert!
 Always expect the unexpected
 Stay at the designated spectator areas
 Remember that in an accident anything can happen
 Always follow the instructions of the marshals
 Your safety - Your life
ONLY A SAFE RALLY IS A GOOD RALLY

#AriNeedsYou msauk.org/rallyfuture

SS3 & SS6 ALWEN 1 & 2



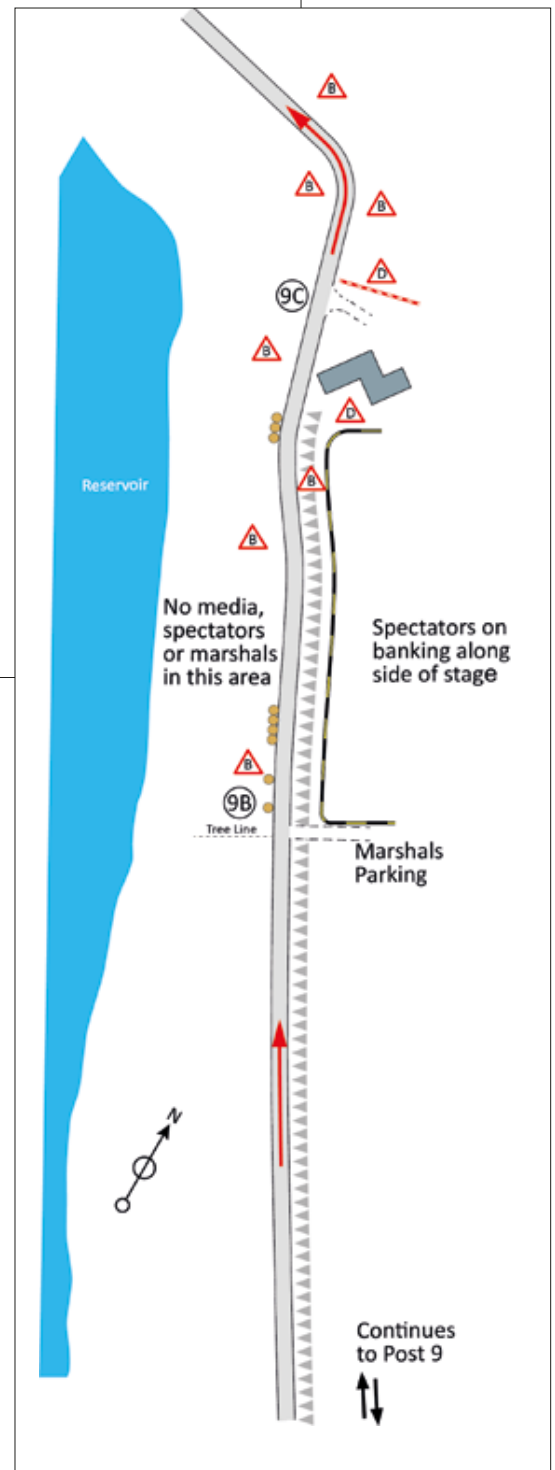
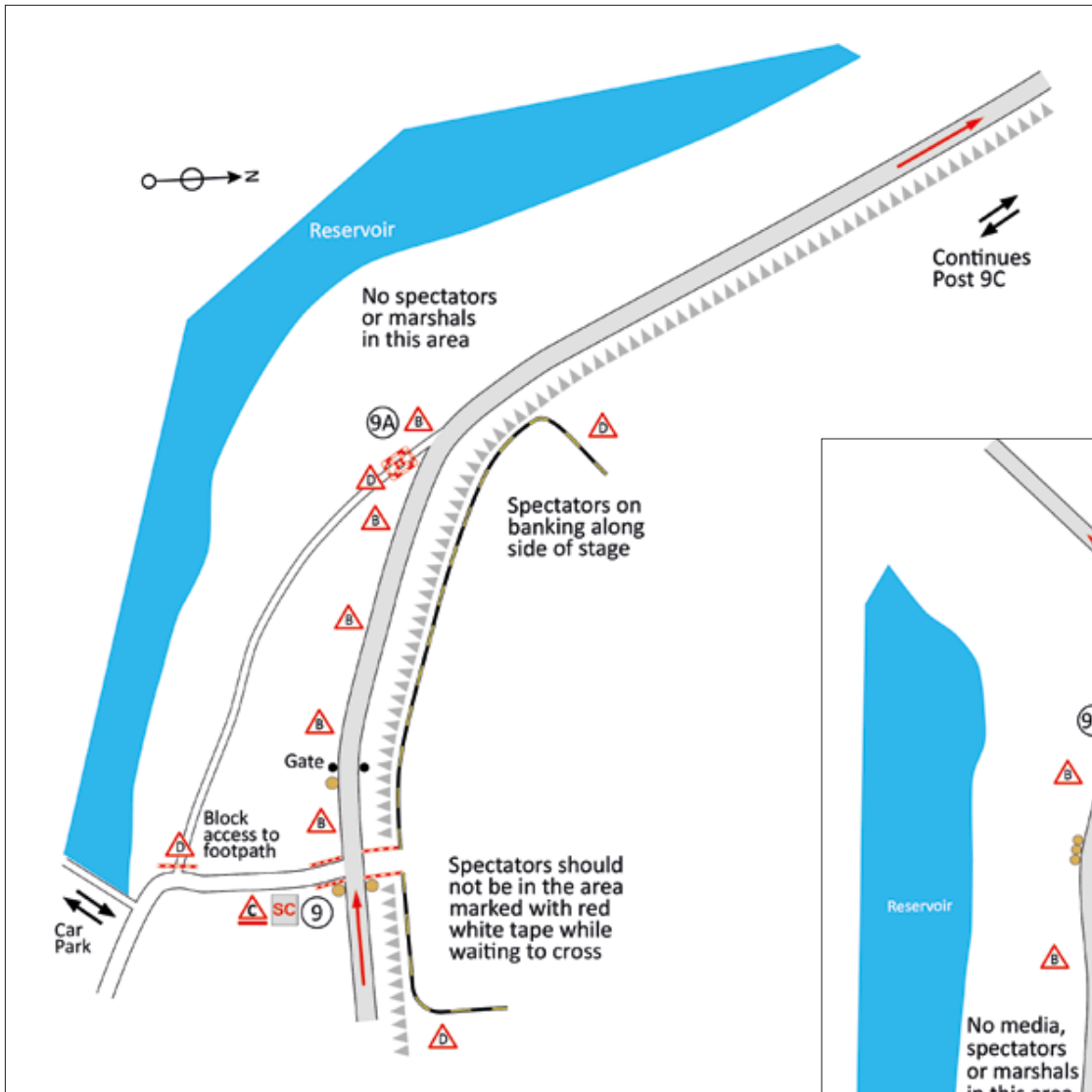
SPECTATE SAFELY!

**ARI
NEEDS
YOU
TO**

Be alert!
Always expect the unexpected
Stay at the designated spectator areas
Remember that in an accident anything can happen
Always follow the instructions of the marshals
Your safety - Your life
ONLY A SAFE RALLY IS A GOOD RALLY

#AriNeedsYou msauk.org/rallyfuture

SS3 & SS6 ALWEN 1 & 2



SPECTATE SAFELY!

ARI NEEDS YOU TO

Be alert!
Always expect the unexpected
Stay at the designated spectator areas
Remember that in an accident anything can happen
Always follow the instructions of the marshals
Your safety - Your life
ONLY A SAFE RALLY IS A GOOD RALLY

#AriNeedsYou msauk.org/rallyfuture



SS7 TWIN LAKES

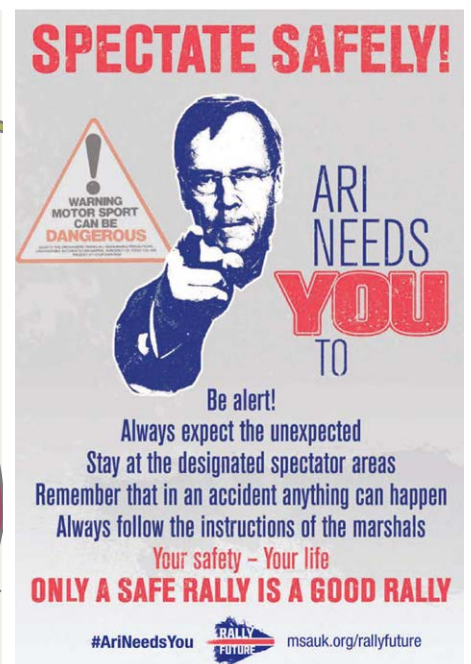
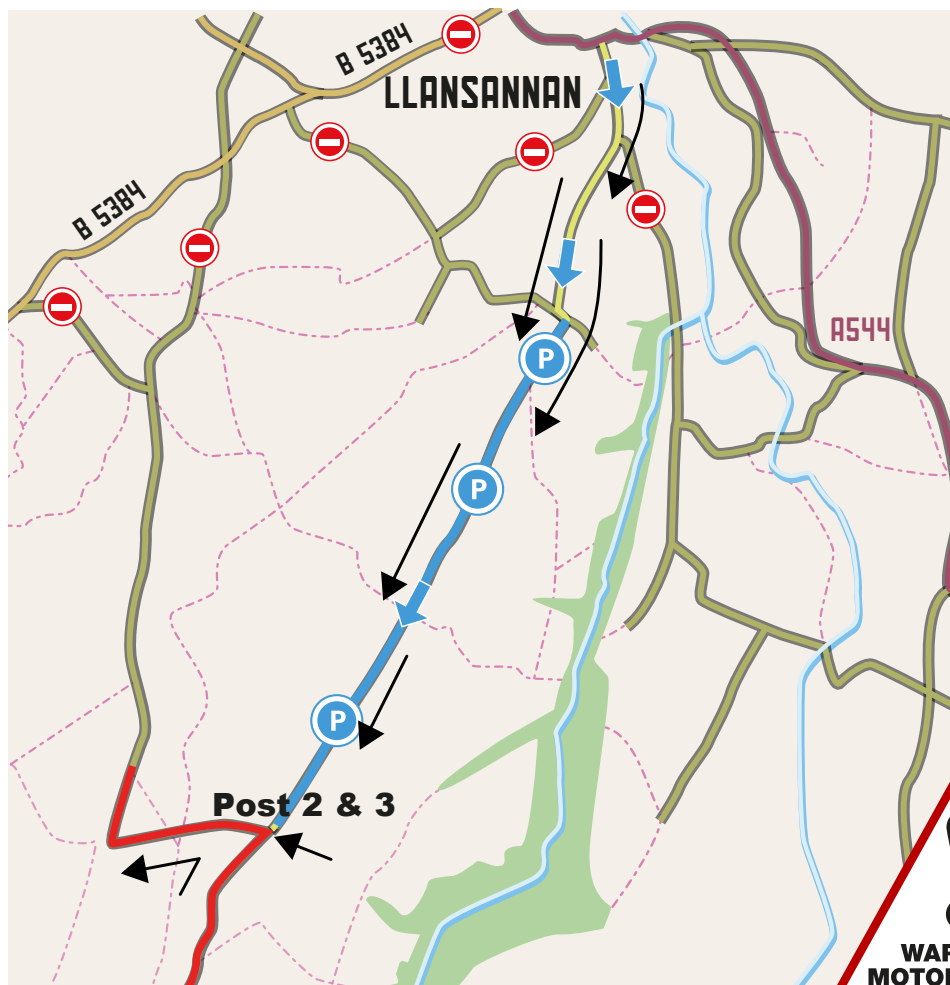
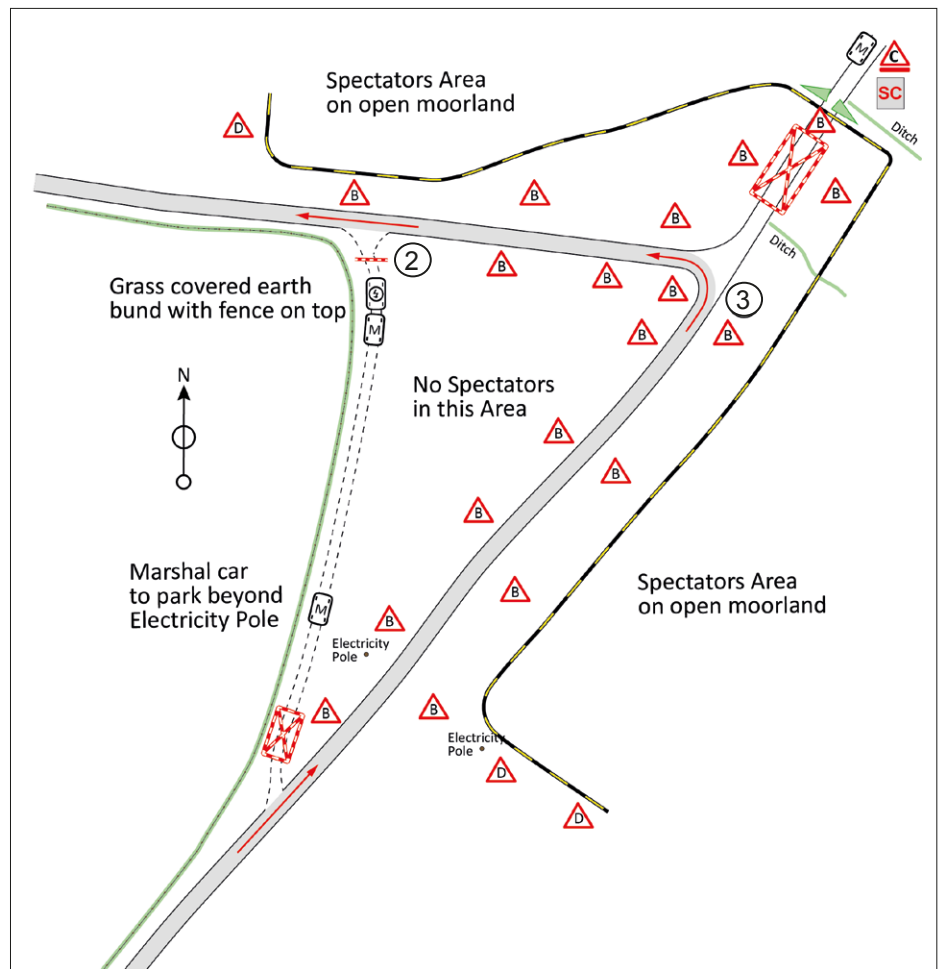
FIRST CAR DUE: 15.01 || SURFACE: TARMAC ||

3.10 MILES SPECIAL STAGE

A brand new tarmac stage for the Cambrian Rally! A classic rally stage in the making? A very interesting stage to finish off the day!

Follow arrows off the A544 @ Llansannan. Slow and quiet to car parking!! No other entry possible to the stage! Top viewing @ Post 2 and 3 - Fast approach to a tight junction!

Toilets available. £10 per car. (£5 Parking & £5 Programme) Extra programmes available @ £5 each. NO LITTER PLEASE!!!



**KEEP IT
CLEAN**

**Don't give
pests and
diseases
an easy ride**

Human activity is a key factor in the spread of pests and diseases, being able to move them faster and over longer distances than natural means of spread can.

Visitors to the woodlands can play an important part in preventing the spread of pests and diseases. We can unknowingly encounter infection as we walk through the woodland, this can be spread by the mud & leaves that collect on our footwear or wheels. Infection could be spread to the next place we visit if we do not clean our footwear and bikes before our next visit.

You can help reduce the spread of pests and diseases by carrying out simple cleaning tasks. These will hopefully become second nature as you get used to arriving for each walk or bike ride with clean equipment. You can also keep an eye out for any sightings of possible tree disease or pest and report to TreeAlert.



Think feet

Arrive in the woodland with clean boots or shoes. You'll be sure you aren't carrying tree pest or disease from your last walk in the countryside.

After your visit, simply knock any mud and leaves from your footwear and wash any leftover mud off once you're home. This will ensure you don't accidentally move disease across the countryside.



Think wheels

Arriving in the woodland with clean bikes can help prevent the spread of tree diseases too. Brush off any loose dirt from your bike & tyres before you leave the woodland. Once you're home, wash any further mud or debris just to be thorough.

Keeping your bike clean does more than keeping it looking good and working well.



Think future

Keeping it clean really is that simple. You may be wondering what real difference you can actually make - but if we all take small steps together now, we're taking big steps toward keeping Wales' woodlands and countryside beautiful for generations to come.

For areas known to be infected:

Keeping your kit clean is always important for tree health, but there are situations where you may have to take more care.

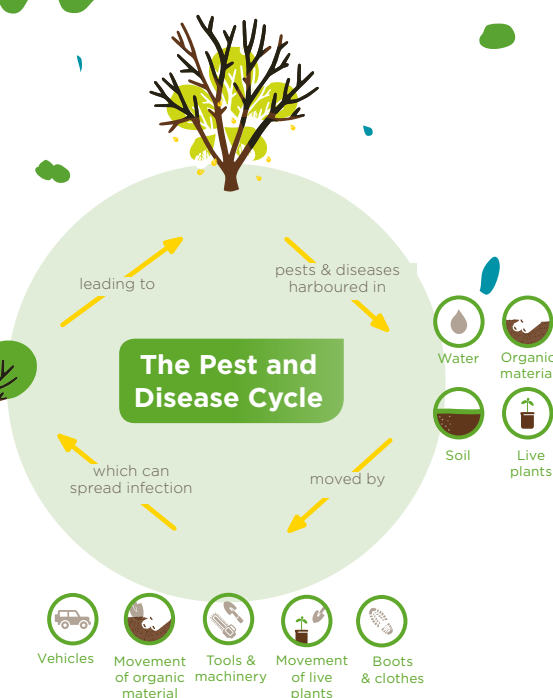
- When there is a pest or disease known to be present
- There is a Plant health Notice in place

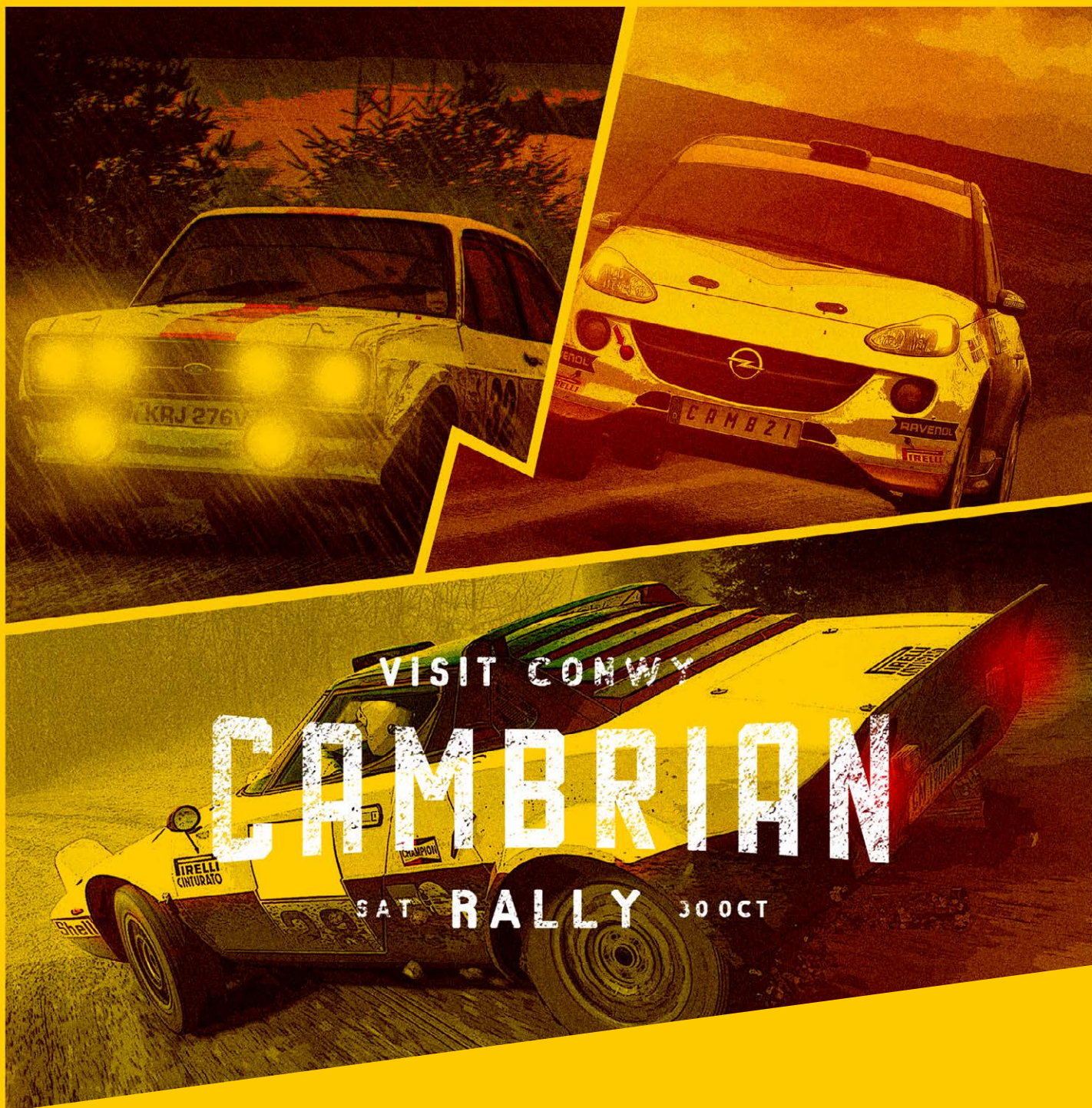
In these cases you are likely to notice a lot more signage around the woodlands. Please take the advice given on any of these signs you come across, they will contain important information in the battle against tree pests and diseases.

Key contacts and resources

- Stay up to date:
- Tell us if you spot any ill health in trees: forestry.gov.uk/treelalert
- Learn more from our biosecurity info

For more information on our #Keepitclean campaign visit <https://naturalresources.wales/forestry/tree-health-and-biosecurity/biosecurity/?lang=en>





**ON BEHALF OF THE NORTH WALES CAR CLUB WE
THANK YOU FOR VISITING THE 2021
VISIT CONWY CAMBRIAN RALLY**

CAMBRIANRALLY.CO.UK

**WE HOPE TO SEE YOU IN LLANDUDNO
ON OCTOBER 29TH 2022***

***PROVISIONAL DATE, SUBJECT TO CHANGE**

f @cambrianrally

t /cambrianrally

@ /nwalescarclub